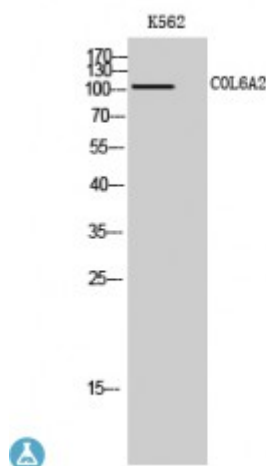


Anti-COL6A2 antibody



Description	Rabbit polyclonal to COL6A2.
Model	STJ92400
Host	Rabbit
Reactivity	Human, Mouse, Simian
Applications	ELISA, IF, IHC, WB
Immunogen	Synthesized peptide derived from human COL6A2
Immunogen Region	660-740 aa, Internal
Gene ID	1292
Gene Symbol	COL6A2
Dilution range	WB 1:500-1:2000IHC 1:100-1:300IF 1:200-1:1000ELISA 1:10000
Specificity	COL6A2 Polyclonal Antibody detects endogenous levels of COL6A2 protein.
Purification	The antibody was affinity-purified from rabbit antiserum by affinity-chromatography using epitope-specific immunogen.
Note	For Research Use Only (RUO).
Protein Name	Collagen alpha-2 VI chain
Molecular Weight	109 kDa
Clonality	Polyclonal
Conjugation	Unconjugated
Isotype	IgG

Formulation	Liquid in PBS containing 50% glycerol, 0.5% BSA and 0.02% sodium azide.
Concentration	1 mg/ml
Storage Instruction	Store at -20°C, and avoid repeat freeze-thaw cycles.
Database Links	HGNC:2212OMIM:120240
Alternative Names	Collagen alpha-2 VI chain
Function	Collagen VI acts as a cell-binding protein.
Cellular Localization	Secreted, extracellular space, extracellular matrix Membrane. Recruited on membranes by CSPG4.
Post-translational Modifications	Prolines at the third position of the tripeptide repeating unit (G-X-Y) are hydroxylated in some or all of the chains.

St John's Laboratory Ltd

F +44 (0)207 681 2580

T +44 (0)208 223 3081

W <http://www.stjohnslabs.com/>

E info@stjohnslabs.com