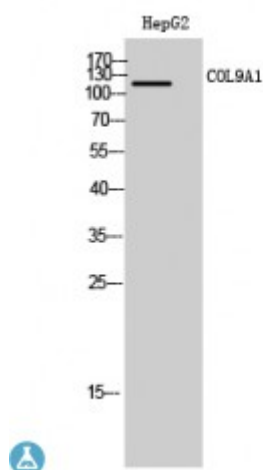


Anti-COL9A1 antibody



Description	Rabbit polyclonal to COL9A1.
Model	STJ92403
Host	Rabbit
Reactivity	Human, Mouse
Applications	ELISA, IHC, WB
Immunogen	Synthesized peptide derived from human COL9A1
Immunogen Region	390-470 aa, Internal
Gene ID	1297
Gene Symbol	COL9A1
Dilution range	WB 1:500-1:2000IHC 1:100-1:300ELISA 1:5000
Specificity	COL9A1 Polyclonal Antibody detects endogenous levels of COL9A1 protein.
Purification	The antibody was affinity-purified from rabbit antiserum by affinity-chromatography using epitope-specific immunogen.
Note	For Research Use Only (RUO).
Protein Name	Collagen alpha-1 IX chain
Molecular Weight	120 kDa
Clonality	Polyclonal
Conjugation	Unconjugated
Isotype	IgG

Formulation	Liquid in PBS containing 50% glycerol, 0.5% BSA and 0.02% sodium azide.
Concentration	1 mg/ml
Storage Instruction	Store at -20°C, and avoid repeat freeze-thaw cycles.
Database Links	HGNC:2217OMIM:120210
Alternative Names	Collagen alpha-1 IX chain
Function	Structural component of hyaline cartilage and vitreous of the eye.
Sequence and Domain Family	Each subunit is composed of three triple-helical domains interspersed with non-collagenous domains. The globular domain at the N-terminus of type IX collagen molecules represents the NC4 domain which may participate in electrostatic interactions with polyanionic glycosaminoglycans in cartilage.
Cellular Localization	Secreted, extracellular space, extracellular matrix
Post-translational Modifications	Covalently linked to the telopeptides of type II collagen by lysine-derived cross-links.; Prolines at the third position of the tripeptide repeating unit (G-X-Y) are hydroxylated in some or all of the chains.

St John's Laboratory Ltd

F +44 (0)207 681 2580

T +44 (0)208 223 3081

W <http://www.stjohnslabs.com/>

E info@stjohnslabs.com