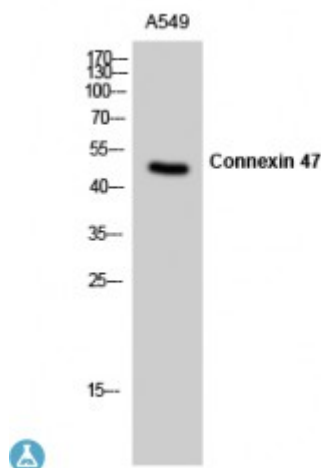


## Anti-Connexin 47 antibody



<b>Description</b>	Rabbit polyclonal to Connexin 47.
<b>Model</b>	STJ92414
<b>Host</b>	Rabbit
<b>Reactivity</b>	Human
<b>Applications</b>	ELISA, IF, WB
<b>Immunogen</b>	Synthesized peptide derived from human Connexin 47
<b>Immunogen Region</b>	40-120 aa, N-terminal
<b>Gene ID</b>	<a href="#">57165</a>
<b>Gene Symbol</b>	<a href="#">GJC2</a>
<b>Dilution range</b>	WB 1:500-1:2000IF 1:200-1:1000ELISA 1:10000
<b>Specificity</b>	Connexin 47 Polyclonal Antibody detects endogenous levels of Connexin 47 protein.
<b>Tissue Specificity</b>	Expressed in central nervous system, in sciatic nerve and sural nerve. Also detected in skeletal muscles.
<b>Purification</b>	The antibody was affinity-purified from rabbit antiserum by affinity-chromatography using epitope-specific immunogen.
<b>Note</b>	For Research Use Only (RUO).
<b>Protein Name</b>	Gap junction gamma-2 protein Connexin-46.6 Cx46.6 Connexin-47 Cx47 Gap junction alpha-12 protein
<b>Molecular Weight</b>	47 kDa

<b>Clonality</b>	Polyclonal
<b>Conjugation</b>	Unconjugated
<b>Isotype</b>	IgG
<b>Formulation</b>	Liquid in PBS containing 50% glycerol, 0.5% BSA and 0.02% sodium azide.
<b>Concentration</b>	1 mg/ml
<b>Storage Instruction</b>	Store at -20°C, and avoid repeat freeze-thaw cycles.
<b>Database Links</b>	<a href="#">HGNC:17494</a> <a href="#">OMIM:608803</a>
<b>Alternative Names</b>	Gap junction gamma-2 protein Connexin-46.6 Cx46.6 Connexin-47 Cx47 Gap junction alpha-12 protein
<b>Function</b>	One gap junction consists of a cluster of closely packed pairs of transmembrane channels, the connexons, through which materials of low MW diffuse from one cell to a neighboring cell. May play a role in myelination in central and peripheral nervous systems.
<b>Cellular Localization</b>	Cell membrane. Multi-pass membrane protein. Cell junction, gap junction.

---

**St John's Laboratory Ltd**

**F** +44 (0)207 681 2580

**T** +44 (0)208 223 3081

**W** <http://www.stjohnslabs.com/>

**E** [info@stjohnslabs.com](mailto:info@stjohnslabs.com)