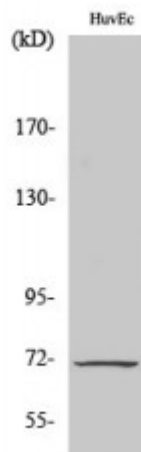


## Anti-Cox-1 antibody



<b>Description</b>	Rabbit polyclonal to Cox-1.
<b>Model</b>	STJ92432
<b>Host</b>	Rabbit
<b>Reactivity</b>	Human
<b>Applications</b>	ELISA, IHC, WB
<b>Immunogen</b>	Synthesized peptide derived from human Cox-1
<b>Immunogen Region</b>	520-600 aa, C-terminal
<b>Gene ID</b>	<a href="#">5742</a>
<b>Gene Symbol</b>	<a href="#">PTGS1</a>
<b>Dilution range</b>	WB 1:500-1:2000IHC 1:100-1:300ELISA 1:40000
<b>Specificity</b>	Cox-1 Polyclonal Antibody detects endogenous levels of Cox-1 protein.
<b>Purification</b>	The antibody was affinity-purified from rabbit antiserum by affinity-chromatography using epitope-specific immunogen.
<b>Note</b>	For Research Use Only (RUO).
<b>Protein Name</b>	Prostaglandin G/H synthase 1 Cyclooxygenase-1 COX-1 Prostaglandin H2 synthase 1 PGH synthase 1 PGHS-1 PHS 1 Prostaglandin-endoperoxide synthase 1
<b>Molecular Weight</b>	69 kDa
<b>Clonality</b>	Polyclonal
<b>Conjugation</b>	Unconjugated

<b>Isotype</b>	IgG
<b>Formulation</b>	Liquid in PBS containing 50% glycerol, 0.5% BSA and 0.02% sodium azide.
<b>Concentration</b>	1 mg/ml
<b>Storage Instruction</b>	Store at -20°C, and avoid repeat freeze-thaw cycles.
<b>Database Links</b>	<a href="#">HGNC:9604OMIM:176805</a>
<b>Alternative Names</b>	Prostaglandin G/H synthase 1 Cyclooxygenase-1 COX-1 Prostaglandin H2 synthase 1 PGH synthase 1 PGHS-1 PHS 1 Prostaglandin-endoperoxide synthase 1
<b>Function</b>	Converts arachidonate to prostaglandin H2 (PGH2), a committed step in prostanoid synthesis. Involved in the constitutive production of prostanoids in particular in the stomach and platelets. In gastric epithelial cells, it is a key step in the generation of prostaglandins, such as prostaglandin E2 (PGE2), which plays an important role in cytoprotection. In platelets, it is involved in the generation of thromboxane A2 (TXA2), which promotes platelet activation and aggregation, vasoconstriction and proliferation of vascular smooth muscle cells.
<b>Cellular Localization</b>	Microsome membrane. Peripheral membrane protein. Endoplasmic reticulum membrane. Peripheral membrane protein.