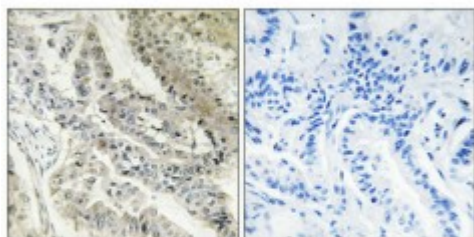


Anti-CRBP-III antibody



Description	Rabbit polyclonal to CRBP-III.
Model	STJ92460
Host	Rabbit
Reactivity	Human
Applications	ELISA, IF, IHC
Immunogen	Synthesized peptide derived from human CRBP-III
Immunogen Region	10-90 aa, N-terminal
Gene ID	83758
Gene Symbol	RBP5
Dilution range	IHC 1:100-1:300IF 1:200-1:1000ELISA 1:20000
Specificity	CRBP-III Polyclonal Antibody detects endogenous levels of CRBP-III protein.
Tissue Specificity	Higher expression in adult kidney and liver and to a lesser extent in adult and fetal spleen, adult lymph nodes and appendix, and fetal liver and kidney. Strongly decreased in hepatocellular carcinoma tissues (at protein level).
Purification	The antibody was affinity-purified from rabbit antiserum by affinity-chromatography using epitope-specific immunogen.
Note	For Research Use Only (RUO).
Protein Name	Retinol-binding protein 5 Cellular retinol-binding protein III CRBP-III HRBPiso

Molecular Weight	15.931 kDa
Clonality	Polyclonal
Conjugation	Unconjugated
Isotype	IgG
Formulation	Liquid in PBS containing 50% glycerol, 0.5% BSA and 0.02% sodium azide.
Concentration	1 mg/ml
Storage Instruction	Store at -20°C, and avoid repeat freeze-thaw cycles.
Database Links	HGNC:15847OMIM:611866
Alternative Names	Retinol-binding protein 5 Cellular retinol-binding protein III CRBP-III HRBPiso
Function	Intracellular transport of retinol.
Sequence and Domain Family	Forms a beta-barrel structure that accommodates hydrophobic ligands in its interior.
Cellular Localization	Cytoplasm

St John's Laboratory Ltd

F +44 (0)207 681 2580

T +44 (0)208 223 3081

W <http://www.stjohnslabs.com/>

E info@stjohnslabs.com