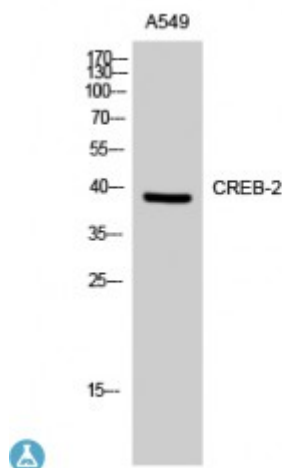


## Anti-CREB-2 antibody



<b>Description</b>	Rabbit polyclonal to CREB-2.
<b>Model</b>	STJ92467
<b>Host</b>	Rabbit
<b>Reactivity</b>	Human
<b>Applications</b>	ELISA, WB
<b>Immunogen</b>	Synthesized peptide derived from human CREB-2 around the non-phosphorylation site of S219.
<b>Immunogen Region</b>	160-240 aa
<b>Gene ID</b>	<a href="#">468</a>
<b>Gene Symbol</b>	<a href="#">ATF4</a>
<b>Dilution range</b>	WB 1:500-1:2000ELISA 1:10000
<b>Specificity</b>	CREB-2 Polyclonal Antibody detects endogenous levels of CREB-2 protein.
<b>Purification</b>	The antibody was affinity-purified from rabbit antiserum by affinity-chromatography using epitope-specific immunogen.
<b>Note</b>	For Research Use Only (RUO).
<b>Protein Name</b>	Cyclic AMP-dependent transcription factor ATF-4 cAMP-dependent transcription factor ATF-4 Activating transcription factor 4 Cyclic AMP-responsive element-binding protein 2 CREB-2 cAMP-responsive element-binding protein 2