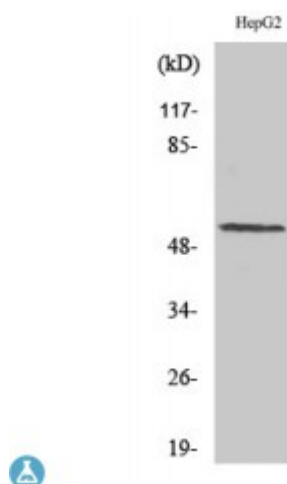


Anti-Cyclin L1 antibody



Description	Rabbit polyclonal to Cyclin L1.
Model	STJ92548
Host	Rabbit
Reactivity	Human, Mouse, Rat
Applications	ELISA, IHC, WB
Immunogen	Synthesized peptide derived from human Cyclin L1
Immunogen Region	430-510 aa, C-terminal
Gene ID	57018
Gene Symbol	CCNL1
Dilution range	WB 1:500-1:2000IHC 1:100-1:300ELISA 1:10000
Specificity	Cyclin L1 Polyclonal Antibody detects endogenous levels of Cyclin L1 protein.
Tissue Specificity	Widely expressed. Overexpression in primary tumors of head and neck squamous cell carcinomas (HNSCC).
Purification	The antibody was affinity-purified from rabbit antiserum by affinity-chromatography using epitope-specific immunogen.
Note	For Research Use Only (RUO).
Protein Name	Cyclin-L1 Cyclin-L
Molecular Weight	60 kDa
Clonality	Polyclonal

Conjugation	Unconjugated
Isotype	IgG
Formulation	Liquid in PBS containing 50% glycerol, 0.5% BSA and 0.02% sodium azide.
Concentration	1 mg/ml
Storage Instruction	Store at -20°C, and avoid repeat freeze-thaw cycles.
Database Links	HGNC:20569OMIM:613384
Alternative Names	Cyclin-L1 Cyclin-L
Function	Involved in pre-mRNA splicing. Functions in association with cyclin-dependent kinases (CDKs) . Inhibited by the CDK-specific inhibitor CDKN1A/p21 . May play a role in the regulation of RNA polymerase II (pol II). May be a candidate proto-oncogene in head and neck squamous cell carcinomas (HNSCC) .
Sequence and Domain Family	Contains a RS region (arginine-serine dipeptide repeat) within the C-terminal domain which is the hallmark of the SR family of splicing factors. This region probably plays a role in protein-protein interactions.
Cellular Localization	Nucleus speckle Nucleus, nucleoplasm. Found in nuclear intrachromatin granules clusters (IGC), also called nuclear speckles, which are storage compartments for nuclear proteins involved in mRNA processing.

St John's Laboratory Ltd

F +44 (0)207 681 2580
T +44 (0)208 223 3081

W <http://www.stjohnslabs.com/>
E info@stjohnslabs.com