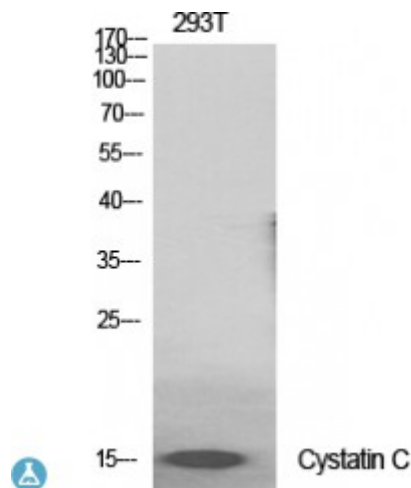


Anti-Cystatin C antibody



Description	Rabbit polyclonal to Cystatin C.
Model	STJ92616
Host	Rabbit
Reactivity	Human, Mouse, Rat, Simian
Applications	ELISA, WB
Immunogen	Synthesized peptide derived from human Cystatin C
Immunogen Region	60-140 aa, Internal
Gene ID	1471
Gene Symbol	CST3
Dilution range	WB 1:500-1:2000ELISA 1:40000
Specificity	Cystatin C Polyclonal Antibody detects endogenous levels of Cystatin C protein.
Tissue Specificity	Expressed in submandibular and sublingual saliva but not in parotid saliva (at protein level). Expressed in various body fluids, such as the cerebrospinal fluid and plasma. Expressed in highest levels in the epididymis, vas deferens, brain, thymus, and ovary and the lowest in the submandibular gland.
Purification	The antibody was affinity-purified from rabbit antiserum by affinity-chromatography using epitope-specific immunogen.
Note	For Research Use Only (RUO).
Protein Name	Cystatin-C Cystatin-3 Gamma-trace Neuroendocrine basic polypeptide Post-gamma-globulin

Molecular Weight	15 kDa
Clonality	Polyclonal
Conjugation	Unconjugated
Isotype	IgG
Formulation	Liquid in PBS containing 50% glycerol, 0.5% BSA and 0.02% sodium azide.
Concentration	1 mg/ml
Storage Instruction	Store at -20°C, and avoid repeat freeze-thaw cycles.
Database Links	HGNC:2475OMIM:105150
Alternative Names	Cystatin-C Cystatin-3 Gamma-trace Neuroendocrine basic polypeptide Post-gamma-globulin
Function	As an inhibitor of cysteine proteinases, this protein is thought to serve an important physiological role as a local regulator of this enzyme activity.
Cellular Localization	Secreted
Post-translational Modifications	The Thr-25 variant is O-glycosylated with a core 1 or possibly core 8 glycan. The signal peptide of the O-glycosylated Thr-25 variant is cleaved between Ala-20 and Val-21.

St John's Laboratory Ltd

F +44 (0)207 681 2580

T +44 (0)208 223 3081

W <http://www.stjohnslabs.com/>

E info@stjohnslabs.com