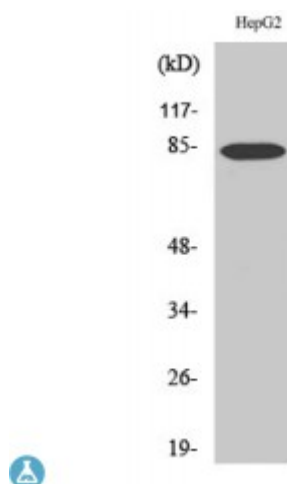


## Anti-DCAMKL2 antibody



### Description

DCAMKL2 is a protein encoded by the DCLK2 gene which is approximately 83,6 kDa. DCAMKL2 is localised to the cytoplasm and is involved in transferase activity, transferring phosphorus-containing groups and protein tyrosine kinase activity. This protein falls under the protein kinase superfamily and the doublecortin family. It contains two N-terminal doublecortin domains, which bind microtubules and regulate microtubule polymerization. It also contains a C-terminal serine/threonine protein kinase domain, which shows substantial homology to Ca<sup>2+</sup>/calmodulin-dependent protein kinase. DCAMKL2 is expressed in the brain, heart and eye. The absence of this protein results in a severe epileptic phenotype and lethality. STJ92663 was affinity-purified from rabbit antiserum by affinity-chromatography using epitope-specific immunogen. This polyclonal antibody detects endogenous levels of DCAMKL2 protein.

<b>Model</b>	STJ92663
<b>Host</b>	Rabbit
<b>Reactivity</b>	Human, Mouse
<b>Applications</b>	ELISA, IF, WB
<b>Immunogen</b>	Synthesized peptide derived from human DCAMKL2
<b>Immunogen Region</b>	1-80 aa, N-terminal
<b>Gene ID</b>	<a href="#">166614</a>
<b>Gene Symbol</b>	<a href="#">DCLK2</a>
<b>Dilution range</b>	WB 1:500-1:2000IF 1:200-1:1000ELISA 1:10000
<b>Specificity</b>	DCAMKL2 Polyclonal Antibody detects endogenous levels of DCAMKL2

protein.

<b>Tissue Specificity</b>	Expressed in the brain, heart and eyes.
<b>Purification</b>	The antibody was affinity-purified from rabbit antiserum by affinity-chromatography using epitope-specific immunogen.
<b>Note</b>	For Research Use Only (RUO).
<b>Protein Name</b>	Serine/threonine-protein kinase DCLK2 CaMK-like CREB regulatory kinase 2 CL2 CLICK-II CLICK2 Doublecortin domain-containing protein 3B Doublecortin-like and CAM kinase-like 2 Doublecortin-like kinase 2
<b>Molecular Weight</b>	83 kDa
<b>Clonality</b>	Polyclonal
<b>Conjugation</b>	Unconjugated
<b>Isotype</b>	IgG
<b>Formulation</b>	Liquid in PBS containing 50% glycerol, 0.5% BSA and 0.02% sodium azide.
<b>Concentration</b>	1 mg/ml
<b>Storage Instruction</b>	Store at -20°C, and avoid repeat freeze-thaw cycles.
<b>Database Links</b>	<a href="#">HGNC:19002OMIM:613166</a>
<b>Alternative Names</b>	Serine/threonine-protein kinase DCLK2 CaMK-like CREB regulatory kinase 2 CL2 CLICK-II CLICK2 Doublecortin domain-containing protein 3B Doublecortin-like and CAM kinase-like 2 Doublecortin-like kinase 2
<b>Function</b>	Protein kinase with a significantly reduced C(a2+)/CAM affinity and dependence compared to other members of the CaMK family. May play a role in the down-regulation of CRE-dependent gene activation probably by phosphorylation of the CREB coactivator CRTC2/TORC2 and the resulting retention of TORC2 in the cytoplasm .
<b>Sequence and Domain Family</b>	The doublecortin domains are involved in the colocalization with microtubules.
<b>Cellular Localization</b>	Cytoplasm, cytoskeleton. Colocalizes with microtubules.
<b>Post-translational Modifications</b>	Autophosphorylated.