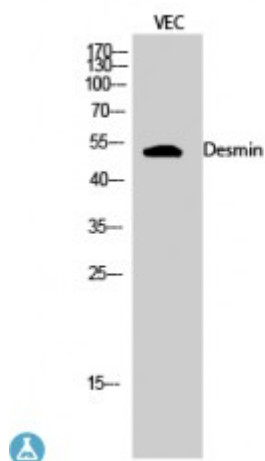


Anti-Desmin antibody



Description	Rabbit polyclonal to Desmin.
Model	STJ92691
Host	Rabbit
Reactivity	Human, Mouse, Rat
Applications	ELISA, IF, IHC, WB
Immunogen	Synthesized peptide derived from human Desmin
Immunogen Region	390-470 aa, C-terminal
Gene ID	1674
Gene Symbol	DES
Dilution range	WB 1:500-1:2000IHC 1:100-1:300IF 1:200-1:1000ELISA 1:10000
Specificity	Desmin Polyclonal Antibody detects endogenous levels of Desmin protein.
Purification	The antibody was affinity-purified from rabbit antiserum by affinity-chromatography using epitope-specific immunogen.
Note	For Research Use Only (RUO).
Protein Name	Desmin
Molecular Weight	53 kDa
Clonality	Polyclonal
Conjugation	Unconjugated
Isotype	IgG

Formulation	Liquid in PBS containing 50% glycerol, 0.5% BSA and 0.02% sodium azide.
Concentration	1 mg/ml
Storage Instruction	Store at -20°C, and avoid repeat freeze-thaw cycles.
Database Links	HGNC:27700MIM:125660
Alternative Names	Desmin
Function	Desmin are class-III intermediate filaments found in muscle cells. In adult striated muscle they form a fibrous network connecting myofibrils to each other and to the plasma membrane from the periphery of the Z-line structures . May act as a sarcomeric microtubule-anchoring protein: specifically associates with detyrosinated tubulin-alpha chains, leading to buckled microtubules and mechanical resistance to contraction.
Cellular Localization	Cytoplasm, myofibril, sarcomere, Z line Cytoplasm Cell membrane, sarcolemma. Localizes in the intercalated disks which occur at the Z line of cardiomyocytes .
Post-translational Modifications	ADP-ribosylation prevents ability to form intermediate filaments.