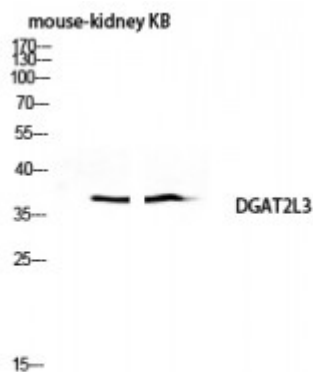


Anti-DGAT2L3 antibody



Description	Rabbit polyclonal to DGAT2L3.
Model	STJ92694
Host	Rabbit
Reactivity	Human
Applications	ELISA, WB
Immunogen	Synthesized peptide derived from human DGAT2L3
Immunogen Region	230-310 aa, C-terminal
Gene ID	158833
Gene Symbol	AWAT1
Dilution range	WB 1:500-1:2000ELISA 1:5000
Specificity	DGAT2L3 Polyclonal Antibody detects endogenous levels of DGAT2L3 protein.
Tissue Specificity	Predominantly expressed in skin, where it is limited to the sebaceous gland. Expressed in more mature, centrally located cells just before their rupture and sebum release. Also expressed in all tissues except spleen. Expressed at higher level in thymus, prostate and testis.
Purification	The antibody was affinity-purified from rabbit antiserum by affinity-chromatography using epitope-specific immunogen.
Note	For Research Use Only (RUO).
Protein Name	Acyl-CoA wax alcohol acyltransferase 1 Diacylglycerol O-acyltransferase 2-like protein 3 Diacylglycerol acyltransferase 2 Long-chain-alcohol O-fatty-

	acyltransferase 1
Molecular Weight	39 kDa
Clonality	Polyclonal
Conjugation	Unconjugated
Isotype	IgG
Formulation	Liquid in PBS containing 50% glycerol, 0.5% BSA and 0.02% sodium azide.
Concentration	1 mg/ml
Storage Instruction	Store at -20°C, and avoid repeat freeze-thaw cycles.
Database Links	HGNC:23252OMIM:300924
Alternative Names	Acyl-CoA wax alcohol acyltransferase 1 Diacylglycerol O-acyltransferase 2-like protein 3 Diacylglycerol acyltransferase 2 Long-chain-alcohol O-fatty-acyltransferase 1
Function	Acyltransferase that predominantly esterify long chain (wax) alcohols with acyl-CoA-derived fatty acids to produce wax esters. Wax esters are enriched in sebum, suggesting that it plays a central role in lipid metabolism in skin. Has a preference for arachidyl alcohol as well as decyl alcohol, demonstrating its relatively poor activity using saturated long chain alcohols (C16, C18, and C20).
Cellular Localization	Endoplasmic reticulum membrane