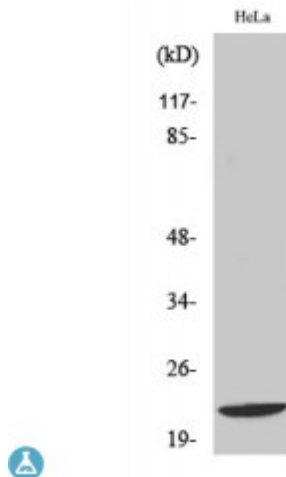


Anti-Di-Ras1 antibody



Description	Rabbit polyclonal to Di-Ras1.
Model	STJ92718
Host	Rabbit
Reactivity	Human
Applications	ELISA, IF, IHC, WB
Immunogen	Synthesized peptide derived from human Di-Ras1
Immunogen Region	120-200 aa, C-terminal
Gene ID	148252
Gene Symbol	DIRAS1
Dilution range	WB 1:500-1:2000IHC 1:100-1:300IF 1:200-1:1000ELISA 1:20000
Specificity	Di-Ras1 Polyclonal Antibody detects endogenous levels of Di-Ras1 protein.
Tissue Specificity	Highly expressed in heart and brain.
Purification	The antibody was affinity-purified from rabbit antiserum by affinity-chromatography using epitope-specific immunogen.
Note	For Research Use Only (RUO).
Protein Name	GTP-binding protein Di-Ras1 Distinct subgroup of the Ras family member 1 Ras-related inhibitor of cell growth Rig Small GTP-binding tumor suppressor 1
Molecular Weight	22 kDa
Clonality	Polyclonal

Conjugation	Unconjugated
Isotype	IgG
Formulation	Liquid in PBS containing 50% glycerol, 0.5% BSA and 0.02% sodium azide.
Concentration	1 mg/ml
Storage Instruction	Store at -20°C, and avoid repeat freeze-thaw cycles.
Database Links	HGNC:19127OMIM:607862
Alternative Names	GTP-binding protein Di-Ras1 Distinct subgroup of the Ras family member 1 Ras-related inhibitor of cell growth Rig Small GTP-binding tumor suppressor 1
Function	Displays low GTPase activity and exists predominantly in the GTP-bound form.
Cellular Localization	Cell membrane

St John's Laboratory Ltd

F +44 (0)207 681 2580

T +44 (0)208 223 3081

W <http://www.stjohnslabs.com/>

E info@stjohnslabs.com