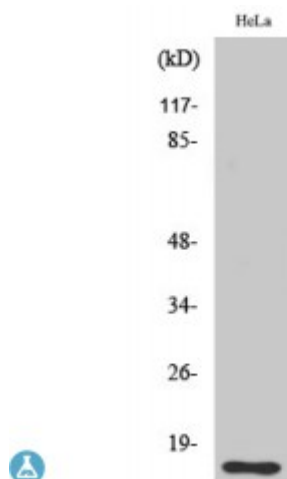


Anti-DOC-1 antibody



Description	Rabbit polyclonal to DOC-1.
Model	STJ92754
Host	Rabbit
Reactivity	Human, Mouse
Applications	ELISA, WB
Immunogen	Synthesized peptide derived from human DOC-1
Immunogen Region	30-110 aa, Internal
Gene ID	8099
Gene Symbol	CDK2AP1
Dilution range	WB 1:500-1:2000ELISA 1:5000
Specificity	DOC-1 Polyclonal Antibody detects endogenous levels of DOC-1 protein.
Purification	The antibody was affinity-purified from rabbit antiserum by affinity-chromatography using epitope-specific immunogen.
Note	For Research Use Only (RUO).
Protein Name	Cyclin-dependent kinase 2-associated protein 1 CDK2-associated protein 1 Deleted in oral cancer 1 DOC-1 Putative oral cancer suppressor
Molecular Weight	20 kDa
Clonality	Polyclonal
Conjugation	Unconjugated

Isotype	IgG
Formulation	Liquid in PBS containing 50% glycerol, 0.5% BSA and 0.02% sodium azide.
Concentration	1 mg/ml
Storage Instruction	Store at -20°C, and avoid repeat freeze-thaw cycles.
Database Links	HGNC:14002OMIM:602198
Alternative Names	Cyclin-dependent kinase 2-associated protein 1 CDK2-associated protein 1 Deleted in oral cancer 1 DOC-1 Putative oral cancer suppressor
Function	specific inhibitor of the cell-cycle kinase CDK2.
Post-translational Modifications	Phosphorylated in vitro by IKBKE at Ser-46.

St John's Laboratory Ltd

F +44 (0)207 681 2580
T +44 (0)208 223 3081

W <http://www.stjohnslabs.com/>
E info@stjohnslabs.com