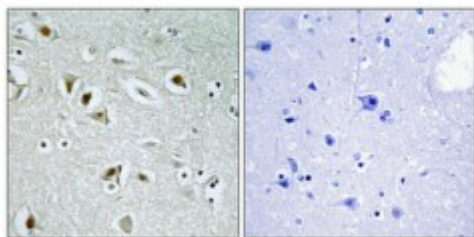


Anti-DOC-1R antibody



Description	Rabbit polyclonal to DOC-1R.
Model	STJ92755
Host	Rabbit
Reactivity	Human, Mouse
Applications	ELISA, IHC
Immunogen	Synthesized peptide derived from human DOC-1R
Immunogen Region	30-110 aa, Internal
Gene ID	10263
Gene Symbol	CDK2AP2
Dilution range	IHC 1:100-1:300ELISA 1:5000
Specificity	DOC-1R Polyclonal Antibody detects endogenous levels of DOC-1R protein.
Tissue Specificity	Ubiquitous.
Purification	The antibody was affinity-purified from rabbit antiserum by affinity-chromatography using epitope-specific immunogen.
Note	For Research Use Only (RUO).
Protein Name	Cyclin-dependent kinase 2-associated protein 2 CDK2-associated protein 2 DOC-1-related protein DOC-1R
Molecular Weight	13.101 kDa
Clonality	Polyclonal

Conjugation	Unconjugated
Isotype	IgG
Formulation	Liquid in PBS containing 50% glycerol, 0.5% BSA and 0.02% sodium azide.
Concentration	1 mg/ml
Storage Instruction	Store at -20°C, and avoid repeat freeze-thaw cycles.
Database Links	HGNC:30833 OMIM:NA
Alternative Names	Cyclin-dependent kinase 2-associated protein 2 CDK2-associated protein 2 DOC-1-related protein DOC-1R
Function	Plays a role in regulating the self-renewal of embryonic stem cells (ESCs) and in maintaining cell survival during terminal differentiation of ESCs. Regulates microtubule organization of metaphase II oocytes . Inhibits cell cycle G1/S phase transition by repressing CDK2 expression and activation; represses CDK2 activation by inhibiting its interaction with cyclin E and A .
Cellular Localization	Cytoplasm Nucleus. Accumulates in immature oocytes in the nucleus. During the first meiotic division, accumulates in the cytoplasm and localizes in dots in the vicinity of the chromosomes in a region enriched in microtubules.
Post-translational Modifications	Phosphorylated by MAPK1 and CDK2.

St John's Laboratory Ltd

F +44 (0)207 681 2580
T +44 (0)208 223 3081

W <http://www.stjohnslabs.com/>
E info@stjohnslabs.com