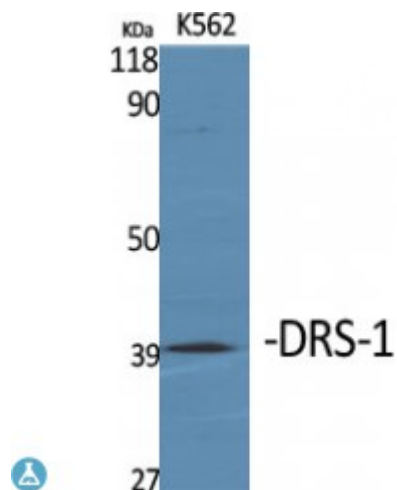


## Anti-DRS-1 antibody



<b>Description</b>	Rabbit polyclonal to DRS-1.
<b>Model</b>	STJ92780
<b>Host</b>	Rabbit
<b>Reactivity</b>	Human
<b>Applications</b>	ELISA, IHC, WB
<b>Immunogen</b>	Synthesized peptide derived from human DRS-1
<b>Immunogen Region</b>	50-130 aa, Internal
<b>Gene ID</b>	<a href="#">10455</a>
<b>Gene Symbol</b>	<a href="#">ECI2</a>
<b>Dilution range</b>	WB 1:500-1:2000IHC 1:100-1:300ELISA 1:20000
<b>Specificity</b>	DRS-1 Polyclonal Antibody detects endogenous levels of DRS-1 protein.
<b>Tissue Specificity</b>	Abundant in heart, skeletal muscle and liver. Expressed in CD34(+) T-cells and CD34(+) bone marrow cells.
<b>Purification</b>	The antibody was affinity-purified from rabbit antiserum by affinity-chromatography using epitope-specific immunogen.
<b>Note</b>	For Research Use Only (RUO).
<b>Protein Name</b>	Enoyl-CoA delta isomerase 2, mitochondrial DRS-1 Delta 3,delta 2-enoyl-CoA isomerase D3,D2-enoyl-CoA isomerase Diazepam-binding inhibitor-related protein 1 DBI-related protein 1 Dodecenoyl-CoA isomerase