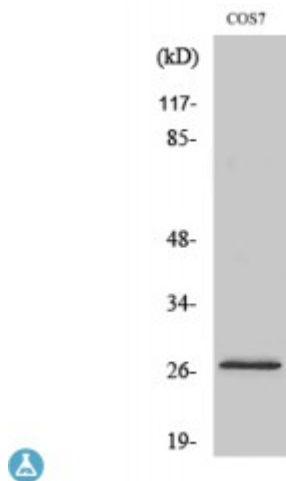


Anti-DUSP19 antibody



Description	Rabbit polyclonal to DUSP19.
Model	STJ92788
Host	Rabbit
Reactivity	Human, Simian
Applications	ELISA, IF, WB
Immunogen	Synthesized peptide derived from human DUSP19
Immunogen Region	80-160 aa, Internal
Gene ID	142679
Gene Symbol	DUSP19
Dilution range	WB 1:500-1:2000IF 1:200-1:1000ELISA 1:20000
Specificity	DUSP19 Polyclonal Antibody detects endogenous levels of DUSP19 protein.
Tissue Specificity	Expressed in the heart, lung, liver, and pancreas. The expression level in the pancreas is the highest.
Purification	The antibody was affinity-purified from rabbit antiserum by affinity-chromatography using epitope-specific immunogen.
Note	For Research Use Only (RUO).
Protein Name	Dual specificity protein phosphatase 19 Dual specificity phosphatase TS-DSP1 Low molecular weight dual specificity phosphatase 3 LMW-DSP3 Protein phosphatase SKRP1 Stress-activated protein kinase pathway-regulating phosphatas

Molecular Weight	28 kDa
Clonality	Polyclonal
Conjugation	Unconjugated
Isotype	IgG
Formulation	Liquid in PBS containing 50% glycerol, 0.5% BSA and 0.02% sodium azide.
Concentration	1 mg/ml
Storage Instruction	Store at -20°C, and avoid repeat freeze-thaw cycles.
Database Links	HGNC:18894 OMIM:611437
Alternative Names	Dual specificity protein phosphatase 19 Dual specificity phosphatase TS-DSP1 Low molecular weight dual specificity phosphatase 3 LMW-DSP3 Protein phosphatase SKRP1 Stress-activated protein kinase pathway-regulating phosphatas
Function	Has a dual specificity toward Ser/Thr and Tyr-containing proteins.

St John's Laboratory Ltd

F +44 (0)207 681 2580

T +44 (0)208 223 3081

W <http://www.stjohnslabs.com/>

E info@stjohnslabs.com