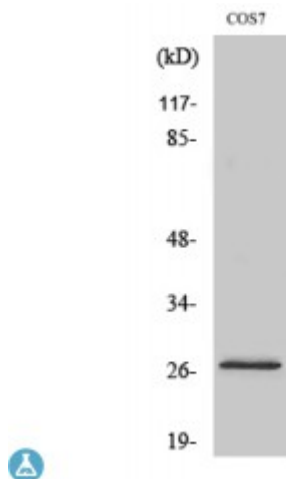


## Anti-DUSP19 antibody



<b>Description</b>	Rabbit polyclonal to DUSP19.
<b>Model</b>	STJ92788
<b>Host</b>	Rabbit
<b>Reactivity</b>	Human, Simian
<b>Applications</b>	ELISA, IF, WB
<b>Immunogen</b>	Synthesized peptide derived from human DUSP19
<b>Immunogen Region</b>	80-160 aa, Internal
<b>Gene ID</b>	<a href="#">142679</a>
<b>Gene Symbol</b>	<a href="#">DUSP19</a>
<b>Dilution range</b>	WB 1:500-1:2000IF 1:200-1:1000ELISA 1:20000
<b>Specificity</b>	DUSP19 Polyclonal Antibody detects endogenous levels of DUSP19 protein.
<b>Tissue Specificity</b>	Expressed in the heart, lung, liver, and pancreas. The expression level in the pancreas is the highest.
<b>Purification</b>	The antibody was affinity-purified from rabbit antiserum by affinity-chromatography using epitope-specific immunogen.
<b>Note</b>	For Research Use Only (RUO).
<b>Protein Name</b>	Dual specificity protein phosphatase 19 Dual specificity phosphatase TS-DSP1 Low molecular weight dual specificity phosphatase 3 LMW-DSP3 Protein phosphatase SKRP1 Stress-activated protein kinase pathway-regulating phosphatase

<b>Molecular Weight</b>	28 kDa
<b>Clonality</b>	Polyclonal
<b>Conjugation</b>	Unconjugated
<b>Isotype</b>	IgG
<b>Formulation</b>	Liquid in PBS containing 50% glycerol, 0.5% BSA and 0.02% sodium azide.
<b>Concentration</b>	1 mg/ml
<b>Storage Instruction</b>	Store at -20°C, and avoid repeat freeze-thaw cycles.
<b>Database Links</b>	<a href="#">HGNC:18894</a> <a href="#">OMIM:611437</a>
<b>Alternative Names</b>	Dual specificity protein phosphatase 19 Dual specificity phosphatase TS-DSP1 Low molecular weight dual specificity phosphatase 3 LMW-DSP3 Protein phosphatase SKRP1 Stress-activated protein kinase pathway-regulating phosphatas
<b>Function</b>	Has a dual specificity toward Ser/Thr and Tyr-containing proteins.

---

**St John's Laboratory Ltd**

**F** +44 (0)207 681 2580

**T** +44 (0)208 223 3081

**W** <http://www.stjohnslabs.com/>

**E** [info@stjohnslabs.com](mailto:info@stjohnslabs.com)