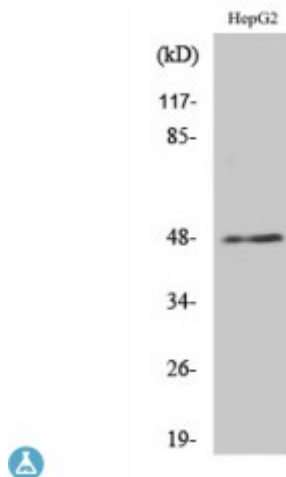


Anti-E2F-2 antibody



Description	Rabbit polyclonal to E2F-2.
Model	STJ92808
Host	Rabbit
Reactivity	Human, Mouse
Applications	ELISA, IHC, WB
Immunogen	Synthesized peptide derived from human E2F-2
Immunogen Region	190-270 aa, Internal
Gene ID	1870
Gene Symbol	E2F2
Dilution range	WB 1:500-1:2000IHC 1:100-1:300ELISA 1:40000
Specificity	E2F-2 Polyclonal Antibody detects endogenous levels of E2F-2 protein.
Tissue Specificity	Highest level of expression is found in placenta, low levels are found in lung. Found as well in many immortalized cell lines derived from tumor samples.
Purification	The antibody was affinity-purified from rabbit antiserum by affinity-chromatography using epitope-specific immunogen.
Note	For Research Use Only (RUO).
Protein Name	Transcription factor E2F2 E2F-2
Molecular Weight	48 kDa
Clonality	Polyclonal

Conjugation	Unconjugated
Isotype	IgG
Formulation	Liquid in PBS containing 50% glycerol, 0.5% BSA and 0.02% sodium azide.
Concentration	1 mg/ml
Storage Instruction	Store at -20°C, and avoid repeat freeze-thaw cycles.
Database Links	HGNC:3114OMIM:600426
Alternative Names	Transcription factor E2F2 E2F-2
Function	Transcription activator that binds DNA cooperatively with DP proteins through the E2 recognition site, 5'-TTTC[CG]CGC-3' found in the promoter region of a number of genes whose products are involved in cell cycle regulation or in DNA replication. The DRTF1/E2F complex functions in the control of cell-cycle progression from g1 to s phase. E2F2 binds specifically to RB1 in a cell-cycle dependent manner.
Cellular Localization	Nucleus.
Post-translational Modifications	Phosphorylated by CDK2 and cyclin A-CDK2 in the S-phase.