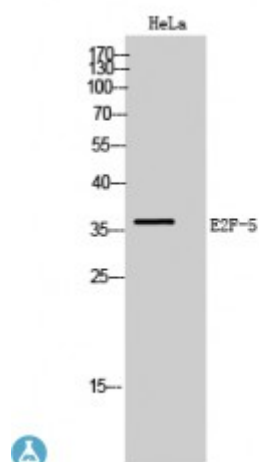


Anti-E2F-5 antibody



Description	Rabbit polyclonal to E2F-5.
Model	STJ92810
Host	Rabbit
Reactivity	Human, Mouse, Rat
Applications	ELISA, WB
Immunogen	Synthesized peptide derived from human E2F-5.
Immunogen Region	Internal
Gene ID	1875
Gene Symbol	E2F5
Dilution range	WB 1:500-1:2000ELISA 1:20000
Specificity	E2F-5 Polyclonal Antibody detects endogenous levels of E2F-5 protein.
Purification	The antibody was affinity-purified from rabbit antiserum by affinity-chromatography using epitope-specific immunogen.
Note	For Research Use Only (RUO).
Protein Name	Transcription factor E2F5 E2F-5
Molecular Weight	36 kDa
Clonality	Polyclonal
Conjugation	Unconjugated
Isotype	IgG

Formulation	Liquid in PBS containing 50% glycerol, 0.5% BSA and 0.02% sodium azide.
Concentration	1 mg/ml
Storage Instruction	Store at -20°C, and avoid repeat freeze-thaw cycles.
Database Links	HGNC:31190MIM:600967
Alternative Names	Transcription factor E2F5 E2F-5
Function	Transcriptional activator that binds to E2F sites, these sites are present in the promoter of many genes whose products are involved in cell proliferation. May mediate growth factor-initiated signal transduction. It is likely involved in the early responses of resting cells to growth factor stimulation. Specifically required for multiciliate cell differentiation: together with MCIDAS and E2F5, binds and activate genes required for centriole biogenesis.
Cellular Localization	Nucleus.

St John's Laboratory Ltd

F +44 (0)207 681 2580

T +44 (0)208 223 3081

W <http://www.stjohnslabs.com/>

E info@stjohnslabs.com