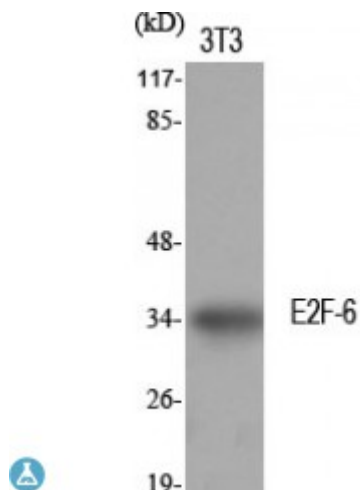


Anti-E2F-6 antibody



Description	Rabbit polyclonal to E2F-6.
Model	STJ92811
Host	Rabbit
Reactivity	Human, Mouse, Rat
Applications	ELISA, IHC, WB
Immunogen	Synthesized peptide derived from human E2F-6
Immunogen Region	110-190 aa, Internal
Gene ID	1876
Gene Symbol	E2F6
Dilution range	WB 1:500-1:2000IHC 1:100-1:300ELISA 1:20000
Specificity	E2F-6 Polyclonal Antibody detects endogenous levels of E2F-6 protein.
Tissue Specificity	Expressed in all tissues examined. Highest levels in placenta, skeletal muscle, heart, ovary, kidney, small intestine and spleen.
Purification	The antibody was affinity-purified from rabbit antiserum by affinity-chromatography using epitope-specific immunogen.
Note	For Research Use Only (RUO).
Protein Name	Transcription factor E2F6 E2F-6
Molecular Weight	35 kDa
Clonality	Polyclonal

Conjugation	Unconjugated
Isotype	IgG
Formulation	Liquid in PBS containing 50% glycerol, 0.5% BSA and 0.02% sodium azide.
Concentration	1 mg/ml
Storage Instruction	Store at -20°C, and avoid repeat freeze-thaw cycles.
Database Links	HGNC:31200MIM:602944
Alternative Names	Transcription factor E2F6 E2F-6
Function	Inhibitor of E2F-dependent transcription. Binds DNA cooperatively with DP proteins through the E2 recognition site, 5'-TTTC[CG]CGC-3'. Has a preference for the 5'-TTTCCCGC-3' E2F recognition site. E2F6 lacks the transcriptional activation and pocket protein binding domains. Appears to regulate a subset of E2F-dependent genes whose products are required for entry into the cell cycle but not for normal cell cycle progression. May silence expression via the recruitment of a chromatin remodeling complex containing histone H3-K9 methyltransferase activity. Overexpression delays the exit of cells from the S-phase.
Cellular Localization	Nucleus.