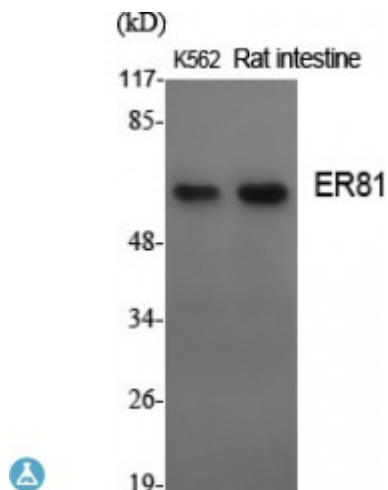


## Anti-ER81 antibody



<b>Description</b>	Rabbit polyclonal to ER81.
<b>Model</b>	STJ92969
<b>Host</b>	Rabbit
<b>Reactivity</b>	Human, Mouse
<b>Applications</b>	ELISA, IHC, WB
<b>Immunogen</b>	Synthesized peptide derived from human ER81
<b>Immunogen Region</b>	10-90 aa, N-terminal
<b>Gene ID</b>	<a href="#">2115</a>
<b>Gene Symbol</b>	<a href="#">ETV1</a>
<b>Dilution range</b>	WB 1:500-1:2000IHC 1:100-1:300ELISA 1:10000
<b>Specificity</b>	ER81 Polyclonal Antibody detects endogenous levels of ER81 protein.
<b>Tissue Specificity</b>	Very highly expressed in brain, highly expressed in testis, lung and heart, moderately in spleen, small intestine, pancreas and colon, weakly in liver, prostate and thymus, very weakly in skeletal muscle, kidney and ovary and not in placenta and peripheral blood leukocytes.
<b>Purification</b>	The antibody was affinity-purified from rabbit antiserum by affinity-chromatography using epitope-specific immunogen.
<b>Note</b>	For Research Use Only (RUO).
<b>Protein Name</b>	ETS translocation variant 1 Ets-related protein 81
<b>Molecular Weight</b>	55 kDa

<b>Clonality</b>	Polyclonal
<b>Conjugation</b>	Unconjugated
<b>Isotype</b>	IgG
<b>Formulation</b>	Liquid in PBS containing 50% glycerol, 0.5% BSA and 0.02% sodium azide.
<b>Concentration</b>	1 mg/ml
<b>Storage Instruction</b>	Store at -20°C, and avoid repeat freeze-thaw cycles.
<b>Database Links</b>	<a href="#">HGNC:34900MIM:600541</a>
<b>Alternative Names</b>	ETS translocation variant 1 Ets-related protein 81
<b>Function</b>	Transcriptional activator that binds to DNA sequences containing the consensus pentanucleotide 5'-CGGA[AT]-3'.
<b>Cellular Localization</b>	Nucleus
<b>Post-translational Modifications</b>	Sumoylated. Phosphorylated at Ser-191 and Ser-216 by RPS6KA1 and RPS6KA5; phosphorylation activates transcriptional activity.

---

**St John's Laboratory Ltd**

**F** +44 (0)207 681 2580

**T** +44 (0)208 223 3081

**W** <http://www.stjohnslabs.com/>

**E** [info@stjohnslabs.com](mailto:info@stjohnslabs.com)