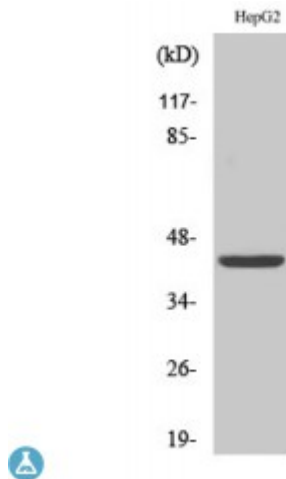


Anti-FOP antibody



Description	Rabbit polyclonal to FOP.
Model	STJ93101
Host	Rabbit
Reactivity	Human, Mouse, Rat
Applications	ELISA, IF, IHC, WB
Immunogen	Synthesized peptide derived from human FOP
Immunogen Region	310-390 aa, C-terminal
Gene ID	11116
Gene Symbol	FGFR1OP
Dilution range	WB 1:500-1:2000IHC 1:100-1:300IF 1:200-1:1000ELISA 1:10000
Specificity	FOP Polyclonal Antibody detects endogenous levels of FOP protein.
Tissue Specificity	Ubiquitous. Highly expressed in heart, liver, muscle, kidney, intestine, colon, adrenal gland, prostate, testis, and pancreas.
Purification	The antibody was affinity-purified from rabbit antiserum by affinity-chromatography using epitope-specific immunogen.
Note	For Research Use Only (RUO).
Protein Name	FGFR1 oncogene partner
Molecular Weight	43 kDa
Clonality	Polyclonal

Conjugation	Unconjugated
Isotype	IgG
Formulation	Liquid in PBS containing 50% glycerol, 0.5% BSA and 0.02% sodium azide.
Concentration	1 mg/ml
Storage Instruction	Store at -20°C, and avoid repeat freeze-thaw cycles.
Database Links	HGNC:17012OMIM:605392
Alternative Names	FGFR1 oncogene partner
Function	Required for anchoring microtubules to the centrosomes.
Cellular Localization	Cytoplasm, cytoskeleton, microtubule organizing center, centrosome. Associated with gamma-tubulin.

St John's Laboratory Ltd

F +44 (0)207 681 2580

T +44 (0)208 223 3081

W <http://www.stjohnslabs.com/>

E info@stjohnslabs.com