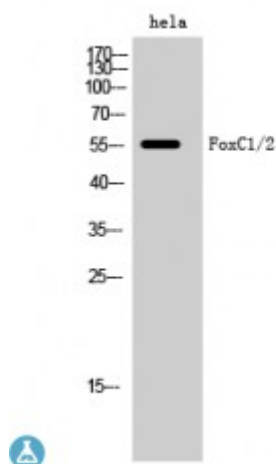


Anti-FoxC1/2 antibody



Description	Rabbit polyclonal to FoxC1/2.
Model	STJ93107
Host	Rabbit
Reactivity	Human, Mouse, Rat
Applications	ELISA, IF, IHC, WB
Immunogen	Synthesized peptide derived from human FoxC1/2
Immunogen Region	120-200 aa, Internal
Gene ID	2296
Gene Symbol	FOXC1
Dilution range	WB 1:500-1:2000IHC 1:100-1:300IF 1:200-1:1000ELISA 1:40000
Specificity	FoxC1/2 Polyclonal Antibody detects endogenous levels of FoxC1/2 protein.
Tissue Specificity	Expressed in all tissues and cell lines examined.
Purification	The antibody was affinity-purified from rabbit antiserum by affinity-chromatography using epitope-specific immunogen.
Note	For Research Use Only (RUO).
Protein Name	Forkhead box protein C1 Forkhead-related protein FKHL7 Forkhead-related transcription factor 3 FREAC-3
Molecular Weight	57 kDa
Clonality	Polyclonal

Conjugation	Unconjugated
Isotype	IgG
Formulation	Liquid in PBS containing 50% glycerol, 0.5% BSA and 0.02% sodium azide.
Concentration	1 mg/ml
Storage Instruction	Store at -20°C, and avoid repeat freeze-thaw cycles.
Database Links	HGNC:38000 MIM:601090
Alternative Names	Forkhead box protein C1 Forkhead-related protein FKHL7 Forkhead-related transcription factor 3 FREAC-3
Function	DNA-binding transcription factor . Upon DNA-binding, promotes DNA bending . Regulates FOXO1 through binding to a conserved element, 5'-GTAAACAAA-3' in its promoter region, implicating FOXC1 as an important regulator of cell viability and resistance to oxidative stress in the eye .
Cellular Localization	Nucleus. Colocalizes with PITX2 isoform 3 in the nucleus .
Post-translational Modifications	Phosphorylated.

St John's Laboratory Ltd

F +44 (0)207 681 2580
T +44 (0)208 223 3081

W <http://www.stjohnslabs.com/>
E info@stjohnslabs.com