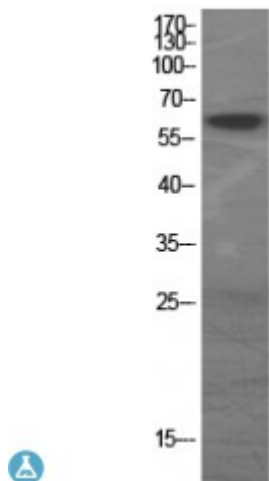


Anti-GAD-65/67 antibody



Description	Rabbit polyclonal to GAD-65/67.
Model	STJ93195
Host	Rabbit
Reactivity	Human, Mouse
Applications	ELISA, IF, IHC, WB
Immunogen	Synthesized peptide derived from human GAD-65/67
Immunogen Region	520-600 aa, C-terminal
Gene ID	2571
Gene Symbol	GAD1
Dilution range	WB 1:500-1:2000IHC 1:100-1:300IF 1:200-1:1000ELISA 1:5000
Specificity	GAD-65/67 Polyclonal Antibody detects endogenous levels of GAD-65/67 protein.
Tissue Specificity	Isoform 3 is expressed in pancreatic islets, testis, adrenal cortex, and perhaps other endocrine tissues, but not in brain.
Purification	The antibody was affinity-purified from rabbit antiserum by affinity-chromatography using epitope-specific immunogen.
Note	For Research Use Only (RUO).
Protein Name	Glutamate decarboxylase 1 67 kDa glutamic acid decarboxylase GAD-67 Glutamate decarboxylase 67 kDa isoform
Molecular Weight	65 kDa

Clonality	Polyclonal
Conjugation	Unconjugated
Isotype	IgG
Formulation	Liquid in PBS containing 50% glycerol, 0.5% BSA and 0.02% sodium azide.
Concentration	1 mg/ml
Storage Instruction	Store at -20°C, and avoid repeat freeze-thaw cycles.
Database Links	HGNC:4092OMIM:603513
Alternative Names	Glutamate decarboxylase 1 67 kDa glutamic acid decarboxylase GAD-67 Glutamate decarboxylase 67 kDa isoform
Function	Catalyzes the production of GABA.

St John's Laboratory Ltd

F +44 (0)207 681 2580

T +44 (0)208 223 3081

W <http://www.stjohnslabs.com/>

E info@stjohnslabs.com