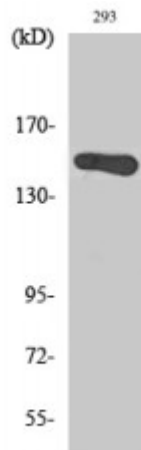


Anti-GAK antibody



Description	Rabbit polyclonal to GAK.
Model	STJ93199
Host	Rabbit
Reactivity	Human, Mouse
Applications	ELISA, IF, IHC, WB
Immunogen	Synthesized peptide derived from human GAK
Immunogen Region	70-150 aa, N-terminal
Gene ID	2580
Gene Symbol	GAK
Dilution range	WB 1:500-1:2000IHC 1:100-1:300IF 1:200-1:1000ELISA 1:5000
Specificity	GAK Polyclonal Antibody detects endogenous levels of GAK protein.
Tissue Specificity	Ubiquitous. Highest in testis.
Purification	The antibody was affinity-purified from rabbit antiserum by affinity-chromatography using epitope-specific immunogen.
Note	For Research Use Only (RUO).
Protein Name	Cyclin-G-associated kinase
Molecular Weight	144 kDa
Clonality	Polyclonal
Conjugation	Unconjugated

Isotype	IgG
Formulation	Liquid in PBS containing 50% glycerol, 0.5% BSA and 0.02% sodium azide.
Concentration	1 mg/ml
Storage Instruction	Store at -20°C, and avoid repeat freeze-thaw cycles.
Database Links	HGNC:4113 OMIM:602052
Alternative Names	Cyclin-G-associated kinase
Function	Associates with cyclin G and CDK5. Seems to act as an auxilin homolog that is involved in the uncoating of clathrin-coated vesicles by Hsc70 in non-neuronal cells. Expression oscillates slightly during the cell cycle, peaking at G1.
Cellular Localization	Cytoplasm, perinuclear region Golgi apparatus, trans-Golgi network Cell junction, focal adhesion. Localizes to the perinuclear area and to the trans-Golgi network. Also seen on the plasma membrane, probably at focal adhesions.

St John's Laboratory Ltd

F +44 (0)207 681 2580

T +44 (0)208 223 3081

W <http://www.stjohnslabs.com/>

E info@stjohnslabs.com