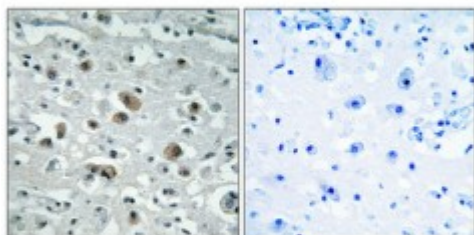


## Anti-GASP-1 antibody



<b>Description</b>	Rabbit polyclonal to GASP-1.
<b>Model</b>	STJ93221
<b>Host</b>	Rabbit
<b>Reactivity</b>	Human
<b>Applications</b>	ELISA, IF, IHC
<b>Immunogen</b>	Synthesized peptide derived from human GASP-1
<b>Immunogen Region</b>	710-790 aa, Internal
<b>Gene ID</b>	<a href="#">9737</a>
<b>Gene Symbol</b>	<a href="#">GPRASP1</a>
<b>Dilution range</b>	IHC 1:100-1:300IF 1:200-1:1000ELISA 1:10000
<b>Specificity</b>	GASP-1 Polyclonal Antibody detects endogenous levels of GASP-1 protein.
<b>Tissue Specificity</b>	Expressed in the brain, with lower expression in medulla, spinal cord and substantia nigra.
<b>Purification</b>	The antibody was affinity-purified from rabbit antiserum by affinity-chromatography using epitope-specific immunogen.
<b>Note</b>	For Research Use Only (RUO).
<b>Protein Name</b>	G-protein coupled receptor-associated sorting protein 1 GASP-1
<b>Molecular Weight</b>	156.865 kDa
<b>Clonality</b>	Polyclonal

<b>Conjugation</b>	Unconjugated
<b>Isotype</b>	IgG
<b>Formulation</b>	Liquid in PBS containing 50% glycerol, 0.5% BSA and 0.02% sodium azide.
<b>Concentration</b>	1 mg/ml
<b>Storage Instruction</b>	Store at -20°C, and avoid repeat freeze-thaw cycles.
<b>Database Links</b>	<a href="https://www.ncbi.nlm.nih.gov/omim/248340">HGNC:24834OMIM:300417</a>
<b>Alternative Names</b>	G-protein coupled receptor-associated sorting protein 1 GASP-1
<b>Function</b>	Modulates lysosomal sorting and functional down-regulation of a variety of G-protein coupled receptors. Targets receptors for degradation in lysosomes via its interaction with BECN2.
<b>Cellular Localization</b>	Cytoplasm

---

**St John's Laboratory Ltd**

**F** +44 (0)207 681 2580

**T** +44 (0)208 223 3081

**W** <http://www.stjohnslabs.com/>

**E** [info@stjohnslabs.com](mailto:info@stjohnslabs.com)