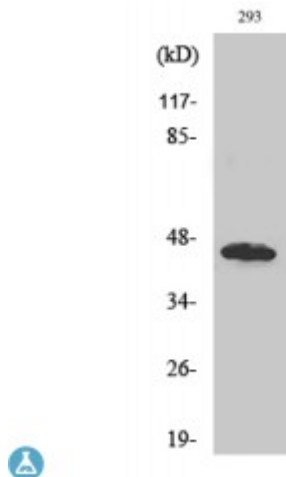


## Anti-GBDR1 antibody



<b>Description</b>	Rabbit polyclonal to GBDR1.
<b>Model</b>	STJ93231
<b>Host</b>	Rabbit
<b>Reactivity</b>	Human
<b>Applications</b>	ELISA, IHC, WB
<b>Immunogen</b>	Synthesized peptide derived from human GBDR1
<b>Immunogen Region</b>	60-140 aa, Internal
<b>Gene ID</b>	<a href="#">10422</a>
<b>Gene Symbol</b>	<a href="#">UBAC1</a>
<b>Dilution range</b>	WB 1:500-1:2000IHC 1:100-1:300ELISA 1:10000
<b>Specificity</b>	GBDR1 Polyclonal Antibody detects endogenous levels of GBDR1 protein.
<b>Tissue Specificity</b>	Ubiquitous.
<b>Purification</b>	The antibody was affinity-purified from rabbit antiserum by affinity-chromatography using epitope-specific immunogen.
<b>Note</b>	For Research Use Only (RUO).
<b>Protein Name</b>	Ubiquitin-associated domain-containing protein 1 UBA domain-containing protein 1 E3 ubiquitin-protein ligase subunit KPC2 Glioblastoma cell differentiation-related protein 1 Kip1 ubiquitination-promoting complex protein 2
<b>Molecular Weight</b>	45 kDa

<b>Clonality</b>	Polyclonal
<b>Conjugation</b>	Unconjugated
<b>Isotype</b>	IgG
<b>Formulation</b>	Liquid in PBS containing 50% glycerol, 0.5% BSA and 0.02% sodium azide.
<b>Concentration</b>	1 mg/ml
<b>Storage Instruction</b>	Store at -20°C, and avoid repeat freeze-thaw cycles.
<b>Database Links</b>	<a href="https://www.ncbi.nlm.nih.gov/Protein/302210">HGNC:30221OMIM:608129</a>
<b>Alternative Names</b>	Ubiquitin-associated domain-containing protein 1 UBA domain-containing protein 1 E3 ubiquitin-protein ligase subunit KPC2 Glioblastoma cell differentiation-related protein 1 Kip1 ubiquitination-promoting complex protein 2
<b>Function</b>	Non-catalytic subunit of the KPC complex that acts as E3 ubiquitin-protein ligase. Required for poly-ubiquitination and proteasome-mediated degradation of CDKN1B during G1 phase of the cell cycle.
<b>Cellular Localization</b>	Cytoplasm

---

**St John's Laboratory Ltd**

**F** +44 (0)207 681 2580

**T** +44 (0)208 223 3081

**W** <http://www.stjohnslabs.com/>

**E** [info@stjohnslabs.com](mailto:info@stjohnslabs.com)