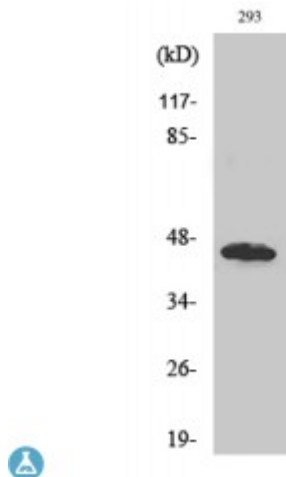


Anti-GBDR1 antibody



Description	Rabbit polyclonal to GBDR1.
Model	STJ93231
Host	Rabbit
Reactivity	Human
Applications	ELISA, IHC, WB
Immunogen	Synthesized peptide derived from human GBDR1
Immunogen Region	60-140 aa, Internal
Gene ID	10422
Gene Symbol	UBAC1
Dilution range	WB 1:500-1:2000IHC 1:100-1:300ELISA 1:10000
Specificity	GBDR1 Polyclonal Antibody detects endogenous levels of GBDR1 protein.
Tissue Specificity	Ubiquitous.
Purification	The antibody was affinity-purified from rabbit antiserum by affinity-chromatography using epitope-specific immunogen.
Note	For Research Use Only (RUO).
Protein Name	Ubiquitin-associated domain-containing protein 1 UBA domain-containing protein 1 E3 ubiquitin-protein ligase subunit KPC2 Glioblastoma cell differentiation-related protein 1 Kip1 ubiquitination-promoting complex protein 2
Molecular Weight	45 kDa

Clonality	Polyclonal
Conjugation	Unconjugated
Isotype	IgG
Formulation	Liquid in PBS containing 50% glycerol, 0.5% BSA and 0.02% sodium azide.
Concentration	1 mg/ml
Storage Instruction	Store at -20°C, and avoid repeat freeze-thaw cycles.
Database Links	HGNC:30221OMIM:608129
Alternative Names	Ubiquitin-associated domain-containing protein 1 UBA domain-containing protein 1 E3 ubiquitin-protein ligase subunit KPC2 Glioblastoma cell differentiation-related protein 1 Kip1 ubiquitination-promoting complex protein 2
Function	Non-catalytic subunit of the KPC complex that acts as E3 ubiquitin-protein ligase. Required for poly-ubiquitination and proteasome-mediated degradation of CDKN1B during G1 phase of the cell cycle.
Cellular Localization	Cytoplasm

St John's Laboratory Ltd

F +44 (0)207 681 2580

T +44 (0)208 223 3081

W <http://www.stjohnslabs.com/>

E info@stjohnslabs.com