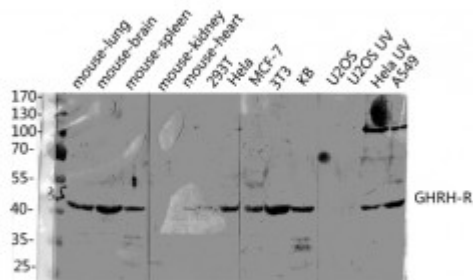


Anti-GHRH-R antibody



Description	Rabbit polyclonal to GHRH-R.
Model	STJ93266
Host	Rabbit
Reactivity	Human, Mouse, Rat
Applications	ELISA, IF, WB
Immunogen	Synthesized peptide derived from human GHRH-R
Immunogen Region	320-400 aa, C-terminal
Gene ID	2692
Gene Symbol	GHRHR
Dilution range	WB 1:500-1:2000IF 1:200-1:1000ELISA 1:20000
Specificity	GHRH-R Polyclonal Antibody detects endogenous levels of GHRH-R protein.
Tissue Specificity	Pituitary gland.
Purification	The antibody was affinity-purified from rabbit antiserum by affinity-chromatography using epitope-specific immunogen.
Note	For Research Use Only (RUO).
Protein Name	Growth hormone-releasing hormone receptor GHRH receptor Growth hormone-releasing factor receptor GRF receptor GRFR
Molecular Weight	47 kDa
Clonality	Polyclonal

Conjugation	Unconjugated
Isotype	IgG
Formulation	Liquid in PBS containing 50% glycerol, 0.5% BSA and 0.02% sodium azide.
Concentration	1 mg/ml
Storage Instruction	Store at -20°C, and avoid repeat freeze-thaw cycles.
Database Links	HGNC:4266OMIM:139191
Alternative Names	Growth hormone-releasing hormone receptor GHRH receptor Growth hormone-releasing factor receptor GRF receptor GRFR
Function	Receptor for GRF, coupled to G proteins which activate adenylyl cyclase. Stimulates somatotroph cell growth, growth hormone gene transcription and growth hormone secretion.
Cellular Localization	Cell membrane. Multi-pass membrane protein.

St John's Laboratory Ltd

F +44 (0)207 681 2580

T +44 (0)208 223 3081

W <http://www.stjohnslabs.com/>

E info@stjohnslabs.com