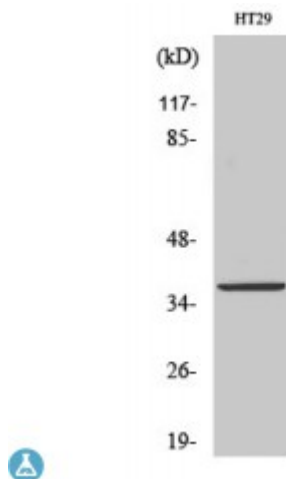


Anti-GIMAP2 antibody



Description	Rabbit polyclonal to GIMAP2.
Model	STJ93268
Host	Rabbit
Reactivity	Human
Applications	ELISA, IF, WB
Immunogen	Synthesized peptide derived from human GIMAP2
Immunogen Region	180-260 aa, Internal
Gene ID	26157
Gene Symbol	GIMAP2
Dilution range	WB 1:500-1:2000IF 1:200-1:1000ELISA 1:20000
Specificity	GIMAP2 Polyclonal Antibody detects endogenous levels of GIMAP2 protein.
Tissue Specificity	Detected in T-cells.
Purification	The antibody was affinity-purified from rabbit antiserum by affinity-chromatography using epitope-specific immunogen.
Note	For Research Use Only (RUO).
Protein Name	GTPase IMAP family member 2 Immunity-associated protein 2 hIMAP2
Molecular Weight	38 kDa
Clonality	Polyclonal
Conjugation	Unconjugated

Isotype	IgG
Formulation	Liquid in PBS containing 50% glycerol, 0.5% BSA and 0.02% sodium azide.
Concentration	1 mg/ml
Storage Instruction	Store at -20°C, and avoid repeat freeze-thaw cycles.
Database Links	HGNC:21789 OMIM:608085
Alternative Names	GTPase IMAF family member 2 Immunity-associated protein 2 hIMAP2
Function	The heterodimer formed by GIMAP2 and GIMAP7 has GTPase activity. In contrast, GIMAP2 has no GTPase activity by itself.
Cellular Localization	Membrane Cytoplasm. Lipid droplet. Detected on the surface of cytoplasmic lipid droplets.

St John's Laboratory Ltd

F +44 (0)207 681 2580

T +44 (0)208 223 3081

W <http://www.stjohnslabs.com/>

E info@stjohnslabs.com