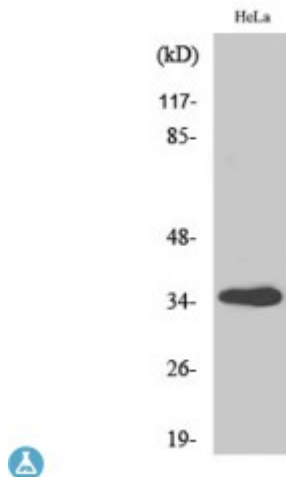


Anti-GIMAP5 antibody



Description	Rabbit polyclonal to GIMAP5.
Model	STJ93270
Host	Rabbit
Reactivity	Human
Applications	ELISA, IHC, WB
Immunogen	Synthesized peptide derived from human GIMAP5
Immunogen Region	200-280 aa, C-terminal
Gene ID	55340
Gene Symbol	GIMAP5
Dilution range	WB 1:500-1:2000IHC 1:100-1:300ELISA 1:20000
Specificity	GIMAP5 Polyclonal Antibody detects endogenous levels of GIMAP5 protein.
Tissue Specificity	Widely expressed with high levels in lymph node and spleen. High expression found in CD4 and CD8-positive T-cells and monocytes with very low levels in B-lymphocytes. Highly expressed in B-lymphocyte-derived neoplasms.
Purification	The antibody was affinity-purified from rabbit antiserum by affinity-chromatography using epitope-specific immunogen.
Note	For Research Use Only (RUO).
Protein Name	GTPase IMAP family member 5 Immunity-associated nucleotide 4-like 1 protein Immunity-associated nucleotide 5 protein IAN-5 hIAN5 Immunity-associated protein 3

Molecular Weight	35 kDa
Clonality	Polyclonal
Conjugation	Unconjugated
Isotype	IgG
Formulation	Liquid in PBS containing 50% glycerol, 0.5% BSA and 0.02% sodium azide.
Concentration	1 mg/ml
Storage Instruction	Store at -20°C, and avoid repeat freeze-thaw cycles.
Database Links	HGNC:18005OMIM:608086
Alternative Names	GTPase IMAP family member 5 Immunity-associated nucleotide 4-like 1 protein Immunity-associated nucleotide 5 protein IAN-5 hIAN5 Immunity-associated protein 3
Function	Required for mitochondrial integrity and T-cell survival. May contribute to T-cell quiescence .
Cellular Localization	Mitochondrion outer membrane Lysosome

St John's Laboratory Ltd

F +44 (0)207 681 2580

T +44 (0)208 223 3081

W <http://www.stjohnslabs.com/>

E info@stjohnslabs.com