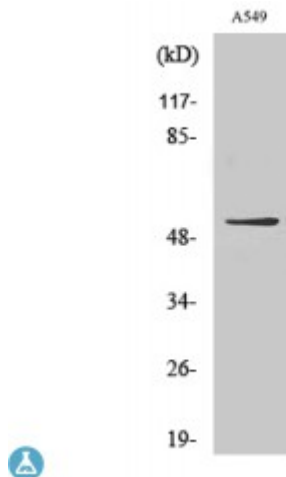


Anti-GIPR antibody



Description	Rabbit polyclonal to GIPR.
Model	STJ93271
Host	Rabbit
Reactivity	Human
Applications	ELISA, IF, IHC, WB
Immunogen	Synthesized peptide derived from human GIPR
Immunogen Region	60-140 aa, Internal
Gene ID	2696
Gene Symbol	GIPR
Dilution range	WB 1:500-1:2000IHC 1:100-1:300IF 1:200-1:1000ELISA 1:20000
Specificity	GIPR Polyclonal Antibody detects endogenous levels of GIPR protein.
Purification	The antibody was affinity-purified from rabbit antiserum by affinity-chromatography using epitope-specific immunogen.
Note	For Research Use Only (RUO).
Protein Name	Gastric inhibitory polypeptide receptor GIP-R Glucose-dependent insulinotropic polypeptide receptor
Molecular Weight	53 kDa
Clonality	Polyclonal
Conjugation	Unconjugated

Isotype	IgG
Formulation	Liquid in PBS containing 50% glycerol, 0.5% BSA and 0.02% sodium azide.
Concentration	1 mg/ml
Storage Instruction	Store at -20°C, and avoid repeat freeze-thaw cycles.
Database Links	HGNC:4271OMIM:137241
Alternative Names	Gastric inhibitory polypeptide receptor GIP-R Glucose-dependent insulinotropic polypeptide receptor
Function	This is a receptor for GIP. The activity of this receptor is mediated by G proteins which activate adenylyl cyclase.
Cellular Localization	Cell membrane. Multi-pass membrane protein.
Post-translational Modifications	N-glycosylation is required for cell surface expression and lengthens receptor half-life by preventing degradation in the ER.

St John's Laboratory Ltd

F +44 (0)207 681 2580

T +44 (0)208 223 3081

W <http://www.stjohnslabs.com/>

E info@stjohnslabs.com