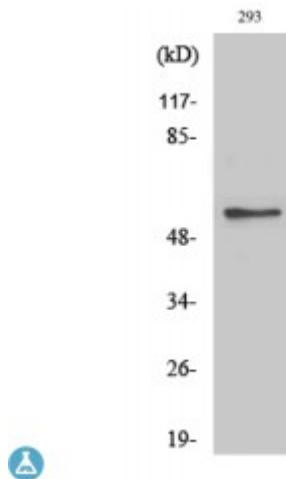


Anti-GK1 antibody



Description	Rabbit polyclonal to GK1.
Model	STJ93275
Host	Rabbit
Reactivity	Human, Mouse, Rat
Applications	ELISA, IF, WB
Immunogen	Synthesized peptide derived from human GK1
Immunogen Region	430-510 aa, C-terminal
Gene ID	2710
Gene Symbol	GK
Dilution range	WB 1:500-1:2000IF 1:200-1:1000ELISA 1:20000
Specificity	GK1 Polyclonal Antibody detects endogenous levels of GK1 protein.
Tissue Specificity	Highly expressed in the liver, kidney and testis. Isoform 2 and isoform 3 are expressed specifically in testis and fetal liver, but not in the adult liver.
Purification	The antibody was affinity-purified from rabbit antiserum by affinity-chromatography using epitope-specific immunogen.
Note	For Research Use Only (RUO).
Protein Name	Glycerol kinase GK Glycerokinase ATP:glycerol 3-phosphotransferase
Molecular Weight	57 kDa
Clonality	Polyclonal

Conjugation	Unconjugated
Isotype	IgG
Formulation	Liquid in PBS containing 50% glycerol, 0.5% BSA and 0.02% sodium azide.
Concentration	1 mg/ml
Storage Instruction	Store at -20°C, and avoid repeat freeze-thaw cycles.
Database Links	HGNC:4289OMIM:300474
Alternative Names	Glycerol kinase GK Glycerokinase ATP:glycerol 3-phosphotransferase
Function	Key enzyme in the regulation of glycerol uptake and metabolism.
Cellular Localization	Mitochondrion outer membrane. Peripheral membrane protein. Cytoplasmic side. Cytoplasm. In sperm and fetal tissues, the majority of the enzyme is bound to mitochondria, but in adult tissues, such as liver found in the cytoplasm.

St John's Laboratory Ltd

F +44 (0)207 681 2580

T +44 (0)208 223 3081

W <http://www.stjohnslabs.com/>

E info@stjohnslabs.com