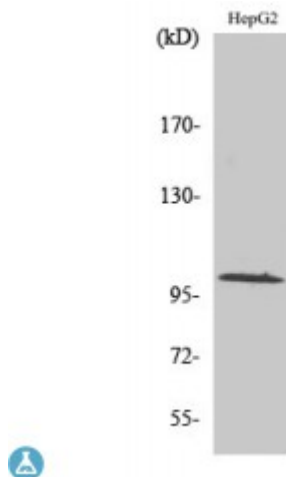


Anti-GLK antibody



Description	Rabbit polyclonal to GLK.
Model	STJ93280
Host	Rabbit
Reactivity	Human, Mouse, Rat
Applications	ELISA, WB
Immunogen	Synthesized peptide derived from human GLK
Immunogen Region	10-90 aa, N-terminal
Gene ID	8491
Gene Symbol	MAP4K3
Dilution range	WB 1:500-1:2000ELISA 1:20000
Specificity	GLK Polyclonal Antibody detects endogenous levels of GLK protein.
Tissue Specificity	Ubiquitously expressed in all tissues examined, with high levels in heart, brain, placenta, skeletal muscle, kidney and pancreas and lower levels in lung and liver.
Purification	The antibody was affinity-purified from rabbit antiserum by affinity-chromatography using epitope-specific immunogen.
Note	For Research Use Only (RUO).
Protein Name	Mitogen-activated protein kinase kinase kinase 3 Germinal center kinase-related protein kinase GLK MAPK/ERK kinase kinase kinase 3 MEK kinase kinase 3 MEKKK 3

Molecular Weight	101 kDa
Clonality	Polyclonal
Conjugation	Unconjugated
Isotype	IgG
Formulation	Liquid in PBS containing 50% glycerol, 0.5% BSA and 0.02% sodium azide.
Concentration	1 mg/ml
Storage Instruction	Store at -20°C, and avoid repeat freeze-thaw cycles.
Database Links	HGNC:6865OMIM:604921
Alternative Names	Mitogen-activated protein kinase kinase kinase 3 Germinal center kinase-related protein kinase GLK MAPK/ERK kinase kinase kinase 3 MEK kinase kinase 3 MEKKK 3
Function	May play a role in the response to environmental stress. Appears to act upstream of the JUN N-terminal pathway.

St John's Laboratory Ltd

F +44 (0)207 681 2580

T +44 (0)208 223 3081

W <http://www.stjohnslabs.com/>

E info@stjohnslabs.com