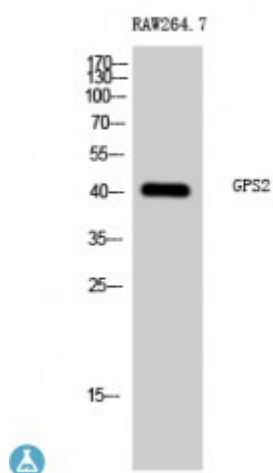


Anti-GPS2 antibody



Description	Rabbit polyclonal to GPS2.
Model	STJ93406
Host	Rabbit
Reactivity	Human, Mouse, Rat
Applications	ELISA, WB
Immunogen	Synthesized peptide derived from human GPS2
Immunogen Region	30-110 aa, N-terminal
Gene ID	2874
Gene Symbol	GPS2
Dilution range	WB 1:500-1:2000ELISA 1:40000
Specificity	GPS2 Polyclonal Antibody detects endogenous levels of GPS2 protein.
Tissue Specificity	Widely expressed.
Purification	The antibody was affinity-purified from rabbit antiserum by affinity-chromatography using epitope-specific immunogen.
Note	For Research Use Only (RUO).
Protein Name	G protein pathway suppressor 2 GPS-2
Molecular Weight	40 kDa
Clonality	Polyclonal
Conjugation	Unconjugated

Isotype	IgG
Formulation	Liquid in PBS containing 50% glycerol, 0.5% BSA and 0.02% sodium azide.
Concentration	1 mg/ml
Storage Instruction	Store at -20°C, and avoid repeat freeze-thaw cycles.
Database Links	HGNC:4550MIM:601935
Alternative Names	G protein pathway suppressor 2 GPS-2
Function	Suppresses G-protein- and mitogen-activated protein kinase-mediated signal transduction.

St John's Laboratory Ltd

F +44 (0)207 681 2580

T +44 (0)208 223 3081

W <http://www.stjohnslabs.com/>

E info@stjohnslabs.com