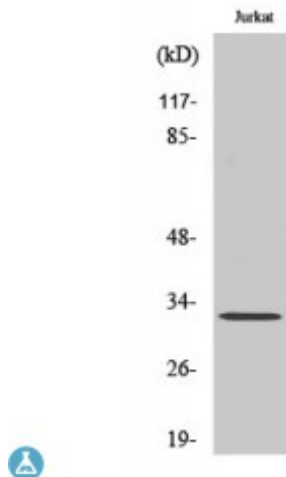


Anti-HEI10 antibody



Description	Rabbit polyclonal to HEI10.
Model	STJ93487
Host	Rabbit
Reactivity	Human
Applications	ELISA, IHC, WB
Immunogen	Synthesized peptide derived from human HEI10
Immunogen Region	180-260 aa, C-terminal
Gene ID	57820
Gene Symbol	CCNB1IP1
Dilution range	WB 1:500-1:2000IHC 1:100-1:300ELISA 1:40000
Specificity	HEI10 Polyclonal Antibody detects endogenous levels of HEI10 protein.
Tissue Specificity	Highly expressed in heart. Detected at intermediate levels in liver and kidney, and at low levels in placenta, brain and lung.
Purification	The antibody was affinity-purified from rabbit antiserum by affinity-chromatography using epitope-specific immunogen.
Note	For Research Use Only (RUO).
Protein Name	E3 ubiquitin-protein ligase CCNB1IP1 Cyclin-B1-interacting protein 1 Human enhancer of invasion 10 RING-type E3 ubiquitin transferase CCNB1IP1
Molecular Weight	32 kDa

Clonality	Polyclonal
Conjugation	Unconjugated
Isotype	IgG
Formulation	Liquid in PBS containing 50% glycerol, 0.5% BSA and 0.02% sodium azide.
Concentration	1 mg/ml
Storage Instruction	Store at -20°C, and avoid repeat freeze-thaw cycles.
Database Links	HGNC:19437OMIM:608249
Alternative Names	E3 ubiquitin-protein ligase CCNB1IP1 Cyclin-B1-interacting protein 1 Human enhancer of invasion 10 RING-type E3 ubiquitin transferase CCNB1IP1
Function	Ubiquitin E3 ligase that acts as a limiting factor for crossing-over during meiosis: required during zygonema to limit the colocalization of RNF212 with MutS-gamma-associated recombination sites and thereby establish early differentiation of crossover and non-crossover sites. Later, it is directed by MutL-gamma to stably accumulate at designated crossover sites. Probably promotes the dissociation of RNF212 and MutS-gamma to allow the progression of recombination and the implementation of the final steps of crossing over . Modulates cyclin-B levels and participates in the regulation of cell cycle progression through the G2 phase. Overexpression causes delayed entry into mitosis. E3 ubiquitin-protein ligase. Modulates cyclin B levels and participates in the regulation of cell cycle progression through the G2 phase. Overexpression causes delayed entry into mitosis.
Cellular Localization	Nucleus. Chromosome. Associates to the synaptonemal complex.
Post-translational Modifications	Ubiquitinated; autoubiquitinated. Phosphorylated by CDK1 on serine or threonine residues (in vitro).