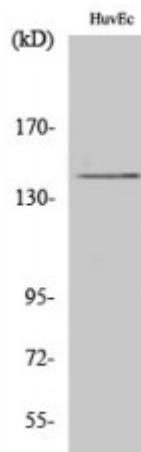


## Anti-HGK antibody



<b>Description</b>	Rabbit polyclonal to HGK.
<b>Model</b>	STJ93495
<b>Host</b>	Rabbit
<b>Reactivity</b>	Human, Mouse
<b>Applications</b>	ELISA, IF, WB
<b>Immunogen</b>	Synthesized peptide derived from human HGK
<b>Immunogen Region</b>	380-460 aa, Internal
<b>Gene ID</b>	<a href="#">9448</a>
<b>Gene Symbol</b>	<a href="#">MAP4K4</a>
<b>Dilution range</b>	WB 1:500-1:2000IF 1:200-1:1000ELISA 1:40000
<b>Specificity</b>	HGK Polyclonal Antibody detects endogenous levels of HGK protein.
<b>Tissue Specificity</b>	Widely expressed. Isoform 5 is abundant in the brain. Isoform 4 is predominant in the liver, skeletal muscle and placenta.
<b>Purification</b>	The antibody was affinity-purified from rabbit antiserum by affinity-chromatography using epitope-specific immunogen.
<b>Note</b>	For Research Use Only (RUO).
<b>Protein Name</b>	Mitogen-activated protein kinase kinase kinase kinase 4 HPK/GCK-like kinase HGK MAPK/ERK kinase kinase kinase 4 MEK kinase kinase 4 MEKKK 4 Nck-interacting kinase
<b>Molecular Weight</b>	142 kDa

<b>Clonality</b>	Polyclonal
<b>Conjugation</b>	Unconjugated
<b>Isotype</b>	IgG
<b>Formulation</b>	Liquid in PBS containing 50% glycerol, 0.5% BSA and 0.02% sodium azide.
<b>Concentration</b>	1 mg/ml
<b>Storage Instruction</b>	Store at -20°C, and avoid repeat freeze-thaw cycles.
<b>Database Links</b>	<a href="#">HGNC:6866OMIM:604666</a>
<b>Alternative Names</b>	Mitogen-activated protein kinase kinase kinase kinase 4 HPK/GCK-like kinase HGK MAPK/ERK kinase kinase kinase 4 MEK kinase kinase 4 MEKKK 4 Nck-interacting kinase
<b>Function</b>	Serine/threonine kinase that may play a role in the response to environmental stress and cytokines such as TNF-alpha. Appears to act upstream of the JUN N-terminal pathway. Phosphorylates SMAD1 on Thr-322.
<b>Cellular Localization</b>	Cytoplasm

---

**St John's Laboratory Ltd**

**F** +44 (0)207 681 2580  
**T** +44 (0)208 223 3081

**W** <http://www.stjohnslabs.com/>  
**E** [info@stjohnslabs.com](mailto:info@stjohnslabs.com)