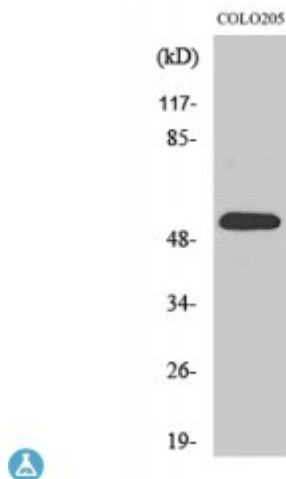


Anti-HisRS antibody



Description	Rabbit polyclonal to HisRS.
Model	STJ93504
Host	Rabbit
Reactivity	Human, Mouse
Applications	ELISA, IF, IHC, WB
Immunogen	Synthesized peptide derived from human HisRS
Immunogen Region	430-510 aa, C-terminal
Gene ID	3035
Gene Symbol	HARS
Dilution range	WB 1:500-1:2000IHC 1:100-1:300IF 1:200-1:1000ELISA 1:20000
Specificity	HisRS Polyclonal Antibody detects endogenous levels of HisRS protein.
Tissue Specificity	Brain, heart, liver and kidney.
Purification	The antibody was affinity-purified from rabbit antiserum by affinity-chromatography using epitope-specific immunogen.
Note	For Research Use Only (RUO).
Protein Name	Histidine--tRNA ligase, cytoplasmic Histidyl-tRNA synthetase HisRS
Molecular Weight	57 kDa
Clonality	Polyclonal
Conjugation	Unconjugated

Isotype	IgG
Formulation	Liquid in PBS containing 50% glycerol, 0.5% BSA and 0.02% sodium azide.
Concentration	1 mg/ml
Storage Instruction	Store at -20°C, and avoid repeat freeze-thaw cycles.
Database Links	HGNC:4816OMIM:142810
Alternative Names	Histidine--tRNA ligase, cytoplasmic Histidyl-tRNA synthetase HisRS
Function	Cytoplasmic histidine--tRNA ligase (Probable). Plays a role in axon guidance.
Cellular Localization	Cytoplasm.

St John's Laboratory Ltd

F +44 (0)207 681 2580

T +44 (0)208 223 3081

W <http://www.stjohnslabs.com/>

E info@stjohnslabs.com