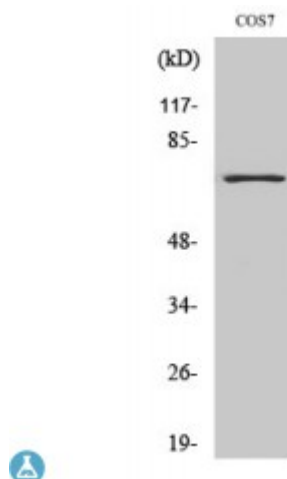


Anti-Histone deacetylase 10 antibody



Description	Rabbit polyclonal to Histone deacetylase 10.
Model	STJ93511
Host	Rabbit
Reactivity	Human, Mouse, Rat, Simian
Applications	ELISA, IHC, WB
Immunogen	Synthesized peptide derived from human Histone deacetylase 10
Immunogen Region	10-90 aa, N-terminal
Gene ID	83933
Gene Symbol	HDAC10
Dilution range	WB 1:500-1:2000IHC 1:100-1:300ELISA 1:10000
Specificity	Histone deacetylase 10 Polyclonal Antibody detects endogenous levels of Histone deacetylase 10 protein.
Tissue Specificity	Ubiquitous. High expression in liver, spleen, pancreas and kidney.
Purification	The antibody was affinity-purified from rabbit antiserum by affinity-chromatography using epitope-specific immunogen.
Note	For Research Use Only (RUO).
Protein Name	Histone deacetylase 10 HD10
Molecular Weight	75 kDa
Clonality	Polyclonal

Conjugation	Unconjugated
Isotype	IgG
Formulation	Liquid in PBS containing 50% glycerol, 0.5% BSA and 0.02% sodium azide.
Concentration	1 mg/ml
Storage Instruction	Store at -20°C, and avoid repeat freeze-thaw cycles.
Database Links	HGNC:18128OMIM:608544
Alternative Names	Histone deacetylase 10 HD10
Function	Responsible for the deacetylation of lysine residues on the N-terminal part of the core histones (H2A, H2B, H3 and H4). Histone deacetylation gives a tag for epigenetic repression and plays an important role in transcriptional regulation, cell cycle progression and developmental events. Histone deacetylases act via the formation of large multiprotein complexes.
Cellular Localization	Cytoplasm. Nucleus. Excluded from the nucleoli.

St John's Laboratory Ltd

F +44 (0)207 681 2580

T +44 (0)208 223 3081

W <http://www.stjohnslabs.com/>

E info@stjohnslabs.com