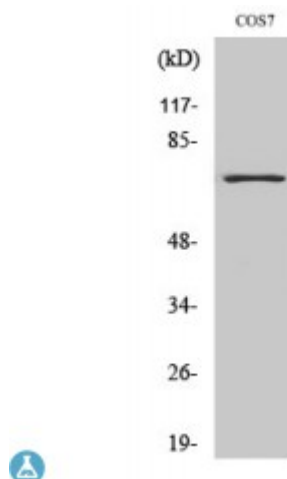


## Anti-Histone deacetylase 10 antibody



<b>Description</b>	Rabbit polyclonal to Histone deacetylase 10.
<b>Model</b>	STJ93511
<b>Host</b>	Rabbit
<b>Reactivity</b>	Human, Mouse, Rat, Simian
<b>Applications</b>	ELISA, IHC, WB
<b>Immunogen</b>	Synthesized peptide derived from human Histone deacetylase 10
<b>Immunogen Region</b>	10-90 aa, N-terminal
<b>Gene ID</b>	<a href="#">83933</a>
<b>Gene Symbol</b>	<a href="#">HDAC10</a>
<b>Dilution range</b>	WB 1:500-1:2000IHC 1:100-1:300ELISA 1:10000
<b>Specificity</b>	Histone deacetylase 10 Polyclonal Antibody detects endogenous levels of Histone deacetylase 10 protein.
<b>Tissue Specificity</b>	Ubiquitous. High expression in liver, spleen, pancreas and kidney.
<b>Purification</b>	The antibody was affinity-purified from rabbit antiserum by affinity-chromatography using epitope-specific immunogen.
<b>Note</b>	For Research Use Only (RUO).
<b>Protein Name</b>	Histone deacetylase 10 HD10
<b>Molecular Weight</b>	75 kDa
<b>Clonality</b>	Polyclonal

<b>Conjugation</b>	Unconjugated
<b>Isotype</b>	IgG
<b>Formulation</b>	Liquid in PBS containing 50% glycerol, 0.5% BSA and 0.02% sodium azide.
<b>Concentration</b>	1 mg/ml
<b>Storage Instruction</b>	Store at -20°C, and avoid repeat freeze-thaw cycles.
<b>Database Links</b>	<a href="#">HGNC:18128OMIM:608544</a>
<b>Alternative Names</b>	Histone deacetylase 10 HD10
<b>Function</b>	Responsible for the deacetylation of lysine residues on the N-terminal part of the core histones (H2A, H2B, H3 and H4). Histone deacetylation gives a tag for epigenetic repression and plays an important role in transcriptional regulation, cell cycle progression and developmental events. Histone deacetylases act via the formation of large multiprotein complexes.
<b>Cellular Localization</b>	Cytoplasm. Nucleus. Excluded from the nucleoli.

---

**St John's Laboratory Ltd**

**F** +44 (0)207 681 2580

**T** +44 (0)208 223 3081

**W** <http://www.stjohnslabs.com/>

**E** [info@stjohnslabs.com](mailto:info@stjohnslabs.com)