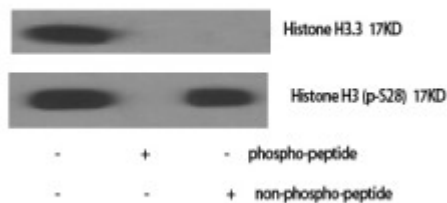


Anti-Histone H3.3 antibody



Description	Rabbit polyclonal to Histone H3.3.
Model	STJ93535
Host	Rabbit
Reactivity	Human, Mouse, Rat
Applications	ELISA, IF, IHC
Immunogen	Synthesized peptide derived from human Histone H3.3 around the non-phosphorylation site of S31.
Immunogen Region	10-90 aa
Gene ID	3020
Gene Symbol	H3F3AH3F3B
Dilution range	IHC 1:100-1:300IF 1:200-1:1000ELISA 1:5000
Specificity	Histone H3.3 Polyclonal Antibody detects endogenous levels of Histone H3.3 protein.
Purification	The antibody was affinity-purified from rabbit antiserum by affinity-chromatography using epitope-specific immunogen.
Note	For Research Use Only (RUO).
Protein Name	Histone H3.3
Molecular Weight	15 kDa
Clonality	Polyclonal
Conjugation	Unconjugated

Isotype	IgG
Formulation	Liquid in PBS containing 50% glycerol, 0.5% BSA and 0.02% sodium azide.
Concentration	1 mg/ml
Storage Instruction	Store at -20°C, and avoid repeat freeze-thaw cycles.
Database Links	HGNC:4764OMIM:137800
Alternative Names	Histone H3.3

St John's Laboratory Ltd

F +44 (0)207 681 2580

T +44 (0)208 223 3081

W <http://www.stjohnslabs.com/>

E info@stjohnslabs.com