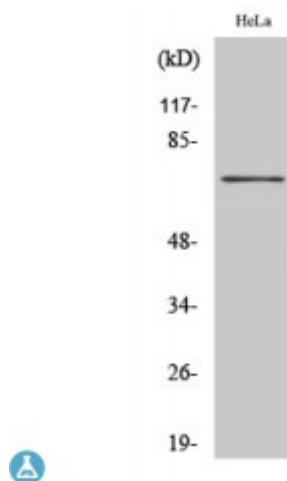


Anti-HKR1 antibody



Description	Rabbit polyclonal to HKR1.
Model	STJ93541
Host	Rabbit
Reactivity	Human
Applications	ELISA, IF, IHC, WB
Immunogen	Synthesized peptide derived from the Internal region of human HKR1
Immunogen Region	110-190 aa, Internal
Gene ID	284459
Gene Symbol	HKR1
Dilution range	WB 1:500-1:2000IHC 1:100-1:300IF 1:200-1:1000ELISA 1:5000
Specificity	HKR1 Polyclonal Antibody detects endogenous levels of HKR1 protein.
Purification	The antibody was affinity-purified from rabbit antiserum by affinity-chromatography using epitope-specific immunogen.
Note	For Research Use Only (RUO).
Protein Name	Krueppel-related zinc finger protein 1 Protein HKR1 Zinc finger protein 875
Molecular Weight	73 kDa
Clonality	Polyclonal
Conjugation	Unconjugated
Isotype	IgG

Formulation	Liquid in PBS containing 50% glycerol, 0.5% BSA and 0.02% sodium azide.
Concentration	1 mg/ml
Storage Instruction	Store at -20°C, and avoid repeat freeze-thaw cycles.
Database Links	HGNC:4928OMIM:165250
Alternative Names	Krueppel-related zinc finger protein 1 Protein HKR1 Zinc finger protein 875
Function	May be involved in transcriptional regulation.
Cellular Localization	Nucleus

St John's Laboratory Ltd

F +44 (0)207 681 2580

T +44 (0)208 223 3081

W <http://www.stjohnslabs.com/>

E info@stjohnslabs.com