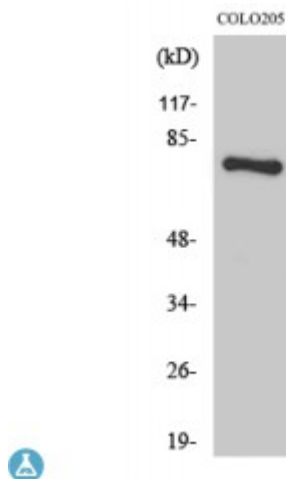


Anti-HLX1 antibody



Description	Rabbit polyclonal to HLX1.
Model	STJ93546
Host	Rabbit
Reactivity	Human, Mouse, Rat
Applications	ELISA, IF, IHC, WB
Immunogen	Synthesized peptide derived from the C-terminal region of human HLX1
Immunogen Region	290-370 aa, C-terminal
Gene ID	3142
Gene Symbol	HLX
Dilution range	WB 1:500-1:2000IHC 1:100-1:300IF 1:200-1:1000ELISA 1:10000
Specificity	HLX1 Polyclonal Antibody detects endogenous levels of HLX1 protein.
Tissue Specificity	Low level in normal B and T-cells, high level in activated lymphocytes and monocytes. Also found in thymus, tonsil, bone marrow, developing vessels, and fetal brain.
Purification	The antibody was affinity-purified from rabbit antiserum by affinity-chromatography using epitope-specific immunogen.
Note	For Research Use Only (RUO).
Protein Name	H2.0-like homeobox protein Homeobox protein HB24 Homeobox protein HLX1
Molecular Weight	75 kDa

Clonality	Polyclonal
Conjugation	Unconjugated
Isotype	IgG
Formulation	Liquid in PBS containing 50% glycerol, 0.5% BSA and 0.02% sodium azide.
Concentration	1 mg/ml
Storage Instruction	Store at -20°C, and avoid repeat freeze-thaw cycles.
Database Links	HGNC:4978OMIM:142995
Alternative Names	H2.0-like homeobox protein Homeobox protein HB24 Homeobox protein HLX1
Function	Transcription factor required for TBX21/T-bet-dependent maturation of Th1 cells as well as maintenance of Th1-specific gene expression. Involved in embryogenesis and hematopoiesis .
Cellular Localization	Nucleus

St John's Laboratory Ltd

F +44 (0)207 681 2580

T +44 (0)208 223 3081

W <http://www.stjohnslabs.com/>

E info@stjohnslabs.com