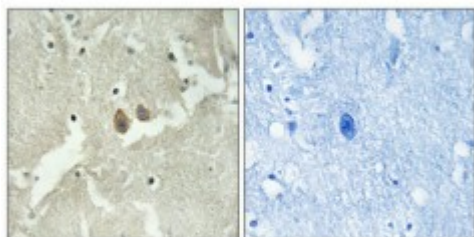


Anti-HMP19 antibody



Description	Rabbit polyclonal to HMP19.
Model	STJ93553
Host	Rabbit
Reactivity	Human, Mouse
Applications	ELISA, IHC
Immunogen	Synthesized peptide derived from human HMP19
Immunogen Region	10-90 aa, Internal
Gene ID	51617
Gene Symbol	HMP19
Dilution range	IHC 1:100-1:300ELISA 1:20000
Specificity	HMP19 Polyclonal Antibody detects endogenous levels of HMP19 protein.
Purification	The antibody was affinity-purified from rabbit antiserum by affinity-chromatography using epitope-specific immunogen.
Note	For Research Use Only (RUO).
Protein Name	Neuronal vesicle trafficking-associated protein 2 Neuron-specific protein family member 2 Protein p19 Hmp19
Molecular Weight	19 kDa
Clonality	Polyclonal
Conjugation	Unconjugated

Isotype	IgG
Formulation	Liquid in PBS containing 50% glycerol, 0.5% BSA and 0.02% sodium azide.
Concentration	1 mg/ml
Storage Instruction	Store at -20°C, and avoid repeat freeze-thaw cycles.
Database Links	HGNC:24955OMIM:616752
Alternative Names	Neuronal vesicle trafficking-associated protein 2 Neuron-specific protein family member 2 Protein p19 Hmp19

St John's Laboratory Ltd

F +44 (0)207 681 2580

T +44 (0)208 223 3081

W <http://www.stjohnslabs.com/>

E info@stjohnslabs.com