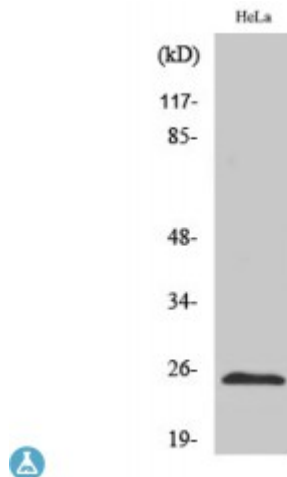


Anti-HP alpha antibody



Description	Rabbit polyclonal to HP1alpha.
Model	STJ93588
Host	Rabbit
Reactivity	Human, Mouse
Applications	ELISA, IF, IHC, WB
Immunogen	Synthesized peptide derived from human HP1alpha
Immunogen Region	10-90 aa, Internal
Gene ID	23468
Gene Symbol	CBX5
Dilution range	WB 1:500-1:2000IHC 1:100-1:300IF 1:200-1:1000ELISA 1:20000
Specificity	HP1alpha Polyclonal Antibody detects endogenous levels of HP1alpha protein.
Purification	The antibody was affinity-purified from rabbit antiserum by affinity-chromatography using epitope-specific immunogen.
Note	For Research Use Only (RUO).
Protein Name	Chromobox protein homolog 5 Antigen p25 Heterochromatin protein 1 homolog alpha HP1 alpha
Molecular Weight	25/22 kDa
Clonality	Polyclonal
Conjugation	Unconjugated

Isotype	IgG
Formulation	Liquid in PBS containing 50% glycerol, 0.5% BSA and 0.02% sodium azide.
Concentration	1 mg/ml
Storage Instruction	Store at -20°C, and avoid repeat freeze-thaw cycles.
Database Links	HGNC:1555OMIM:604478
Alternative Names	Chromobox protein homolog 5 Antigen p25 Heterochromatin protein 1 homolog alpha HP1 alpha
Function	Component of heterochromatin that recognizes and binds histone H3 tails methylated at 'Lys-9' (H3K9me), leading to epigenetic repression. In contrast, it is excluded from chromatin when 'Tyr-41' of histone H3 is phosphorylated (H3Y41ph). Can interact with lamin-B receptor (LBR). This interaction can contribute to the association of the heterochromatin with the inner nuclear membrane. Involved in the formation of functional kinetochore through interaction with MIS12 complex proteins.
Cellular Localization	Nucleus Chromosome Chromosome, centromere. Component of centromeric and pericentromeric heterochromatin. Associates with chromosomes during mitosis. Associates specifically with chromatin during metaphase and anaphase.
Post-translational Modifications	Phosphorylation of HP1 and LBR may be responsible for some of the alterations in chromatin organization and nuclear structure which occur at various times during the cell cycle . Phosphorylated during interphase and possibly hyper-phosphorylated during mitosis. Ubiquitinated.