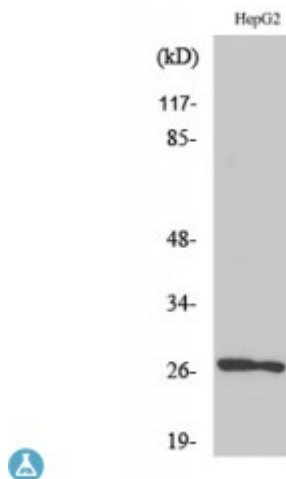


Anti-HSP beta antibody



Description	Rabbit polyclonal to HSP beta2.
Model	STJ93612
Host	Rabbit
Reactivity	Human, Mouse, Rat
Applications	ELISA, IF, IHC, WB
Immunogen	Synthesized peptide derived from human HSP beta2
Immunogen Region	90-170 aa, C-terminal
Gene ID	3316
Gene Symbol	HSPB2
Dilution range	WB 1:500-1:2000IHC 1:100-1:300IF 1:200-1:1000ELISA 1:40000
Specificity	HSP beta2 Polyclonal Antibody detects endogenous levels of HSP beta2 protein.
Tissue Specificity	Expressed preferentially in skeletal muscle and heart but not in the lens.
Purification	The antibody was affinity-purified from rabbit antiserum by affinity-chromatography using epitope-specific immunogen.
Note	For Research Use Only (RUO).
Protein Name	Heat shock protein beta-2 HspB2 DMPK-binding protein MKBP
Molecular Weight	24 kDa
Clonality	Polyclonal

Conjugation	Unconjugated
Isotype	IgG
Formulation	Liquid in PBS containing 50% glycerol, 0.5% BSA and 0.02% sodium azide.
Concentration	1 mg/ml
Storage Instruction	Store at -20°C, and avoid repeat freeze-thaw cycles.
Database Links	HGNC:5247OMIM:602179
Alternative Names	Heat shock protein beta-2 HspB2 DMPK-binding protein MKBP
Function	May regulate the kinase DMPK.
Cellular Localization	Cytoplasm Nucleus. Localizes to nuclear foci.

St John's Laboratory Ltd

F +44 (0)207 681 2580

T +44 (0)208 223 3081

W <http://www.stjohnslabs.com/>

E info@stjohnslabs.com