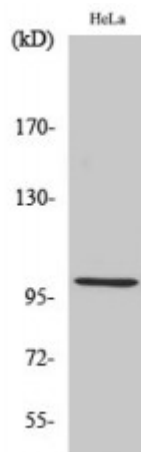


Anti-HSP105 antibody



Description	Rabbit polyclonal to HSP105.
Model	STJ93614
Host	Rabbit
Reactivity	Human, Mouse
Applications	ELISA, IF, IHC, WB
Immunogen	Synthesized peptide derived from human HSP105
Immunogen Region	760-840 aa, C-terminal
Gene ID	10808
Gene Symbol	HSPH1
Dilution range	WB 1:500-1:2000IHC 1:100-1:300IF 1:200-1:1000ELISA 1:10000
Specificity	HSP105 Polyclonal Antibody detects endogenous levels of HSP105 protein.
Tissue Specificity	Highly expressed in testis. Present at lower levels in most brain regions, except cerebellum. Overexpressed in cancer cells.
Purification	The antibody was affinity-purified from rabbit antiserum by affinity-chromatography using epitope-specific immunogen.
Note	For Research Use Only (RUO).
Protein Name	Heat shock protein 105 kDa Antigen NY-CO-25 Heat shock 110 kDa protein
Molecular Weight	100 kDa
Clonality	Polyclonal

Conjugation	Unconjugated
Isotype	IgG
Formulation	Liquid in PBS containing 50% glycerol, 0.5% BSA and 0.02% sodium azide.
Concentration	1 mg/ml
Storage Instruction	Store at -20°C, and avoid repeat freeze-thaw cycles.
Database Links	HGNC:16969OMIM:610703
Alternative Names	Heat shock protein 105 kDa Antigen NY-CO-25 Heat shock 110 kDa protein
Function	Acts as a nucleotide-exchange factor (NEF) for chaperone proteins HSPA1A and HSPA1B, promoting the release of ADP from HSPA1A/B thereby triggering client/substrate protein release . Prevents the aggregation of denatured proteins in cells under severe stress, on which the ATP levels decrease markedly. Inhibits HSPA8/HSC70 ATPase and chaperone activities .
Cellular Localization	Cytoplasm
Post-translational Modifications	Phosphorylation on Ser-509 may be important for regulation of the HSPA8/HSC70 chaperone activity.

St John's Laboratory Ltd

F +44 (0)207 681 2580
T +44 (0)208 223 3081

W <http://www.stjohnslabs.com/>
E info@stjohnslabs.com