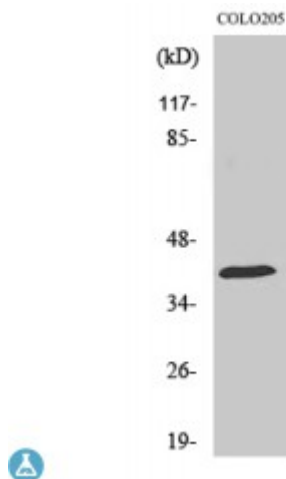


Anti-HSP40 antibody



Description	Rabbit polyclonal to HSP40.
Model	STJ93619
Host	Rabbit
Reactivity	Human, Mouse, Rat
Applications	ELISA, IF, IHC, WB
Immunogen	Synthesized peptide derived from human HSP40
Immunogen Region	240-320 aa, C-terminal
Gene ID	3337
Gene Symbol	DNAJB1
Dilution range	WB 1:500-1:2000IHC 1:100-1:300IF 1:200-1:1000ELISA 1:10000
Specificity	HSP40 Polyclonal Antibody detects endogenous levels of HSP40 protein.
Purification	The antibody was affinity-purified from rabbit antiserum by affinity-chromatography using epitope-specific immunogen.
Note	For Research Use Only (RUO).
Protein Name	DnaJ homolog subfamily B member 1 DnaJ protein homolog 1 Heat shock 40 kDa protein 1 HSP40 Heat shock protein 40 Human DnaJ protein 1 hDj-1
Molecular Weight	45 kDa
Clonality	Polyclonal
Conjugation	Unconjugated

Isotype	IgG
Formulation	Liquid in PBS containing 50% glycerol, 0.5% BSA and 0.02% sodium azide.
Concentration	1 mg/ml
Storage Instruction	Store at -20°C, and avoid repeat freeze-thaw cycles.
Database Links	HGNC:5270OMIM:604572
Alternative Names	DnaJ homolog subfamily B member 1 DnaJ protein homolog 1 Heat shock 40 kDa protein 1 HSP40 Heat shock protein 40 Human DnaJ protein 1 hDj-1
Function	Interacts with HSP70 and can stimulate its ATPase activity. Stimulates the association between HSC70 and HIP. Negatively regulates heat shock-induced HSF1 transcriptional activity during the attenuation and recovery phase period of the heat shock response . Stimulates ATP hydrolysis and the folding of unfolded proteins mediated by HSPA1A/B (in vitro) .
Cellular Localization	Cytoplasm Nucleus Nucleus, nucleolus. Translocates rapidly from the cytoplasm to the nucleus, and especially to the nucleoli, upon heat shock.

St John's Laboratory Ltd

F +44 (0)207 681 2580

T +44 (0)208 223 3081

W <http://www.stjohnslabs.com/>

E info@stjohnslabs.com