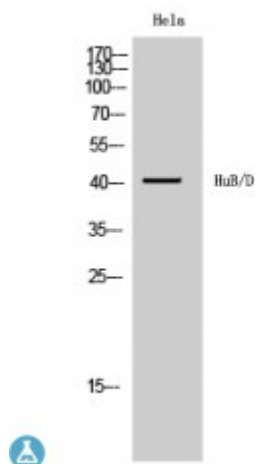


## Anti-HuB/D antibody



<b>Description</b>	Rabbit polyclonal to HuB/D.
<b>Model</b>	STJ93626
<b>Host</b>	Rabbit
<b>Reactivity</b>	Human, Mouse, Rat
<b>Applications</b>	ELISA, IF, IHC, WB
<b>Immunogen</b>	Synthesized peptide derived from human HuB/D
<b>Immunogen Region</b>	30-110 aa, Internal
<b>Gene ID</b>	<a href="#">1993</a>
<b>Gene Symbol</b>	<a href="#">ELAVL2</a>
<b>Dilution range</b>	WB 1:500-1:2000IHC 1:100-1:300IF 1:200-1:1000ELISA 1:40000
<b>Specificity</b>	HuB/D Polyclonal Antibody detects endogenous levels of HuB/D protein.
<b>Tissue Specificity</b>	Brain; neural-specific.
<b>Purification</b>	The antibody was affinity-purified from rabbit antiserum by affinity-chromatography using epitope-specific immunogen.
<b>Note</b>	For Research Use Only (RUO).
<b>Protein Name</b>	ELAV-like protein 2 ELAV-like neuronal protein 1 Hu-antigen B HuB Nervous system-specific RNA-binding protein Hel-N1
<b>Molecular Weight</b>	41 kDa
<b>Clonality</b>	Polyclonal

<b>Conjugation</b>	Unconjugated
<b>Isotype</b>	IgG
<b>Formulation</b>	Liquid in PBS containing 50% glycerol, 0.5% BSA and 0.02% sodium azide.
<b>Concentration</b>	1 mg/ml
<b>Storage Instruction</b>	Store at -20°C, and avoid repeat freeze-thaw cycles.
<b>Database Links</b>	<a href="#">HGNC:3313OMIM:601673</a>
<b>Alternative Names</b>	ELAV-like protein 2 ELAV-like neuronal protein 1 Hu-antigen B HuB Nervous system-specific RNA-binding protein Hel-N1
<b>Function</b>	Binds RNA. Seems to recognize a GAAA motif. Can bind to its own 3'-UTR, the FOS 3'-UTR and the ID 3'-UTR.

---

**St John's Laboratory Ltd**

**F** +44 (0)207 681 2580

**T** +44 (0)208 223 3081

**W** <http://www.stjohnslabs.com/>

**E** [info@stjohnslabs.com](mailto:info@stjohnslabs.com)