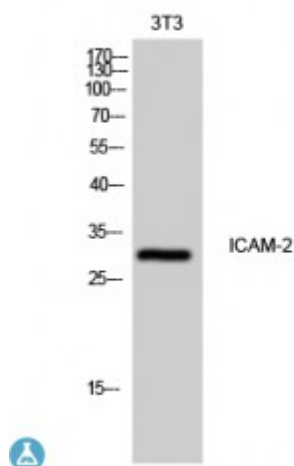


## Anti-ICAM-2 antibody



<b>Description</b>	Rabbit polyclonal to ICAM-2.
<b>Model</b>	STJ93635
<b>Host</b>	Rabbit
<b>Reactivity</b>	Human
<b>Applications</b>	ELISA, WB
<b>Immunogen</b>	Synthesized peptide derived from human ICAM-2
<b>Immunogen Region</b>	120-200 aa, Internal
<b>Gene ID</b>	<a href="#">3384</a>
<b>Gene Symbol</b>	<a href="#">ICAM2</a>
<b>Dilution range</b>	WB 1:500-1:2000ELISA 1:10000
<b>Specificity</b>	ICAM-2 Polyclonal Antibody detects endogenous levels of ICAM-2 protein.
<b>Purification</b>	The antibody was affinity-purified from rabbit antiserum by affinity-chromatography using epitope-specific immunogen.
<b>Note</b>	For Research Use Only (RUO).
<b>Protein Name</b>	Intercellular adhesion molecule 2 ICAM-2 CD antigen CD102
<b>Molecular Weight</b>	30 kDa
<b>Clonality</b>	Polyclonal
<b>Conjugation</b>	Unconjugated
<b>Isotype</b>	IgG

<b>Formulation</b>	Liquid in PBS containing 50% glycerol, 0.5% BSA and 0.02% sodium azide.
<b>Concentration</b>	1 mg/ml
<b>Storage Instruction</b>	Store at -20°C, and avoid repeat freeze-thaw cycles.
<b>Database Links</b>	<a href="https://www.ebi.ac.uk/ENSP/entry/HGNC:5345OMIM:146630">HGNC:5345OMIM:146630</a>
<b>Alternative Names</b>	Intercellular adhesion molecule 2 ICAM-2 CD antigen CD102
<b>Function</b>	ICAM proteins are ligands for the leukocyte adhesion protein LFA-1 (integrin alpha-L/beta-2). ICAM2 may play a role in lymphocyte recirculation by blocking LFA-1-dependent cell adhesion. It mediates adhesive interactions important for antigen-specific immune response, NK-cell mediated clearance, lymphocyte recirculation, and other cellular interactions important for immune response and surveillance.
<b>Cellular Localization</b>	Membrane. Single-pass type I membrane protein.

---

**St John's Laboratory Ltd**

**F** +44 (0)207 681 2580

**T** +44 (0)208 223 3081

**W** <http://www.stjohnslabs.com/>

**E** [info@stjohnslabs.com](mailto:info@stjohnslabs.com)